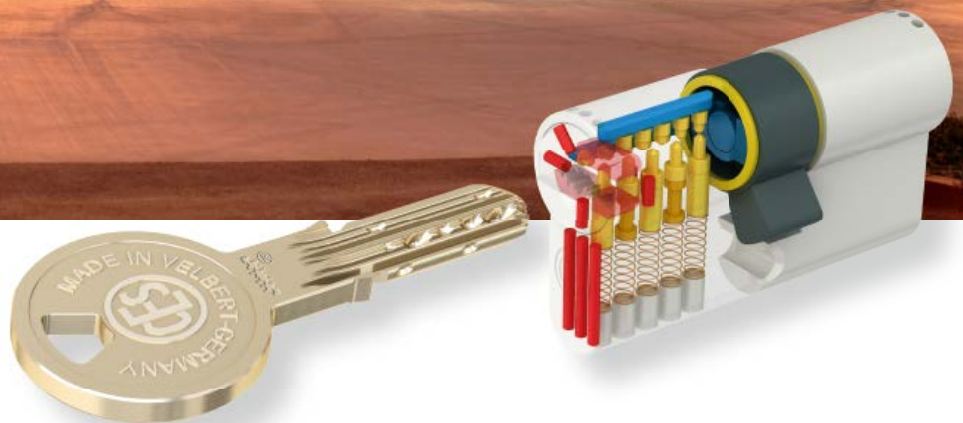


CES System WM

The reversible key section series
with trademark protection for
high standards in industrial building

Uncompromising security



Locking system technology with trademark protection

The CES WM series is a reversible key system designed for industrial buildings. Highest locking precision and multiple security queries ensure optimum protection against manipulation.

As a special feature, the CES WM system enjoys the protection of a registered trademark. In addition to the protection afforded by a patent, a trademark offers an indefinite legal protection.

The WM system can be combined with the electronic locking and access control solutions available from CEStronics. For entrances, access roads or company areas, where access must be restricted to defined times, electronic locking components are the solution of choice as they provide a high level of flexibility for granting and withdrawing access authorizations.

Successful enterprises rely on CES locking engineering with the trademark-protected WM system.

For reasons of security, we do not quote any references at this point. However, we shall gladly establish a contact to users.



The WM system in line with DIN 18252/EN 1303

Optimum locking security

The WM system has up to 25 locking elements on each cylinder side: up to 7 spring-loaded locking pins, 16 combination pins and 2 locking bars ensure a high level of security.

Integrated basic protection against drilling

Already in their standard version, all cylinders of the WM system are provided with an integrated basic protection against drilling. Different materials, such as hardened steel for key and driver pins, are employed to make drilling more difficult. At least one driver pin and at least one key pin are made of hardened steel. And stepped locking pins that cant if a drilling attempt is made prevent the opening of the cylinder.

Locking bar technology

Thanks to the use of locking bars, the locking surfaces are multiplied which guarantees the long-term functioning of the system.

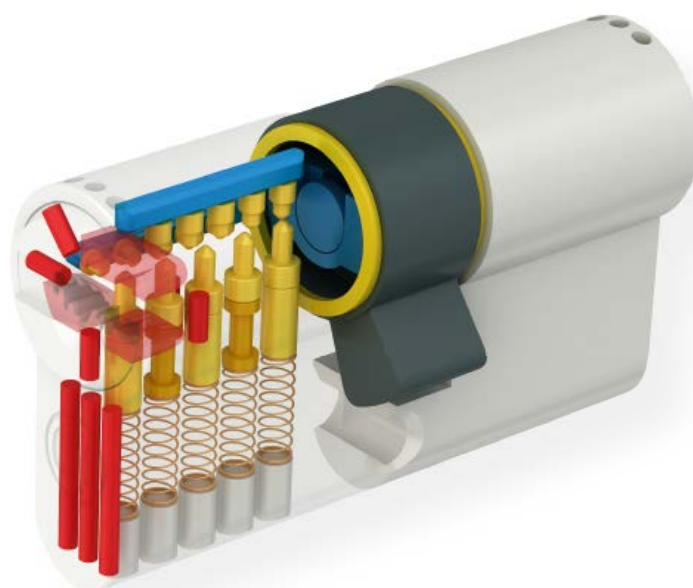
Strong nickel silver key

Very handy and made according to DIN standard. The key shank is at least 14 mm long and perfectly suited for commercial armatures with cylinder covering. Inserting the key into the cylinder is easy thanks to a specially shaped and patented key tip. A guiding groove along the entire cylinder plug ensures a positive transfer of the key torque and prevents breaking of the key.

The key section is subject to indefinite legal protection.

Security card

Replacement orders and extensions are only possible against presentation of the security card supplied with the locking system.



Options and extras

- **Modulare system**

Profile cylinders of the WM system are also available in modular design. This means that – if necessary – the length of these modular cylinders can be adapted to the thickness of the door on site, saving both time and money.

- **Additional antidrilling and antipulling protection**

For applications in particularly security-relevant areas, WM cylinders can be equipped with additional hard-metal pins and plates in the hull and on the cylinder plug face.

- **Double, single and knob cylinders are also available as VdS certified cylinders of the classes AZ, BZ and BZ+ (nos. 910, 951 1/2, 915).**

- **Bump-proof version**

- **Sea-water resistance**

- **Wear resistant version**

- **Colours**

Cylinders are available in a wide range of colours. Upon request, both cylinder halves can also be supplied in different colours.

- **Furniture / special cylinders**

The WM series is also suitable for furniture and special cylinders from the CES range.

- **Electronic access solutions**

WM cylinders are compatible with all electronic locking systems available from CEStronics.

- **Accessories**

Locking system management software CESportier®vision.



Selection of DIN 18252/EN 1303 compliant designs

Double cylinder no. 810 WM

Brass, satin nickel plated
1 nickel silver key

Double cylinder no. 8710 WM

with emergency and danger function
Brass, satin nickel plated
Locking on both sides
1 nickel silver key

Single cylinder no. 851 1/2 WM

Brass, satin nickel plated
Follower adjustable in 12 positions
1 nickel silver key

Knob cylinder no. 815 WM

Brass, satin nickel plated
One side locking
Other side aluminium knob, F1,
various knob shapes available
(figure shows shape H)
1 nickel silver key

Cam cylinder no. 5558/30 WM

Brass, polished nickel plated
Locking movement 90°
Locking direction as desired
Fitting dimension 25 mm
1 nickel silver key

Cylinder padlock no. 215 WM

Stainless steel shackle
Housing 58 mm wide, 50 mm high
Latches without locking
Shackle clearance 35 mm (standard)
1 nickel silver key

Double cylinder no. 802/5 WM

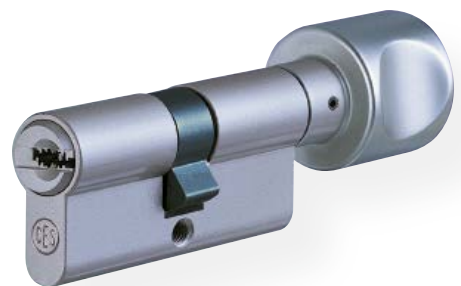
Brass, satin nickel plated
One side locking, the other side blind
1 nickel silver key

Basic lengths for profile cylinder:

5 pins:	27,5/27,5 mm
6 pins:	31,5/31,5 mm
7 pins:	35,5/35,5 mm

Further variants available.

Also available in Swiss, English and Scandinavian profile.



C.Ed. Schulte GmbH
Zylinderschlossfabrik

Friedrichstraße 243
 D-42551 Velbert
 ☎ +49 (0)2051-204-0
 ☎ +49 (0)2051-204-229
 @ info@ces.eu
 www.ces.eu

CEStronics GmbH

Friedrichstraße 243
 D-42551 Velbert
 ☎ +49 (0)2051-204-0
 ☎ +49 (0)2051-204-229
 @ info@ces-tronics.de

CESlocks GmbH

Mettmanner Str. 119
 D-42549 Velbert
 ☎ +49 (0)2051-204-0
 ☎ +49 (0)2051-204-229
 @ info@ces-locks.de

CESfrance SARL

8 Impasse Charles Petit
 F-75011 Paris
 ☎ +33 (0)1-44 87 07 56
 ☎ +33 (0)1-43 07 35 78
 @ info@fr.ces.eu
 www.ces.eu/fr

CESnederland B.V.

Lage Brink 9
 NL- 7317 BD Apeldoorn
 ☎ +31 (0)55-52 66 89-0
 ☎ +31 (0)55-52 66 89-9
 @ infonl@ces.eu
 www.ces.eu/nl

CESitalia srl

V. d. vecchie Fondamenta, 4
 Straße d. A. Gründungen 4
 I-39044 Egna / Neumarkt (BZ)
 ☎ +39 0471-812 294
 ☎ +39 0471-812 294
 @ info@it.ces.eu
 www.ces.eu/it

CESrom srl.

Str. Metalurgistilor 3 D
 RO-550137 Sibiu
 ☎ +40 (0)269-206 00-2
 ☎ +40 (0)269-206 00-5
 @ info@ro.ces.eu

CES Security Solutions Ltd

Unit 4 Kendon Business Park
 Maritime Close
 Medway City Estate
 Rochester, Kent Me2 4JF
 ☎ +44 (1)634713369
 ☎ +44 (1)634786833
 @ info@uk.ces.eu
 www.ces.eu/en

CES Austria

Repräsentanz Österreich
 Cesar A. Carcamo
 Büro: Wiener Bundesstrasse 33
 A-4050 Traun
 ☎ +43 (0660)7320311
 ☎ +43 (0732)210022-2681
 @ office@ces.at
 www.ces.at

CES MIDDLE EAST

Advanced German Products LLC
 Authorized General Distributor
 of CES in Middle East
 PO Box 102761
 UAE Dubai
 ☎ +971 (0) 4 369 7051
 ☎ +971 (0) 4 390 8935
 @ ces-me@ces.eu
 www.agp-dubai.com

Your technical adviser on security matters: