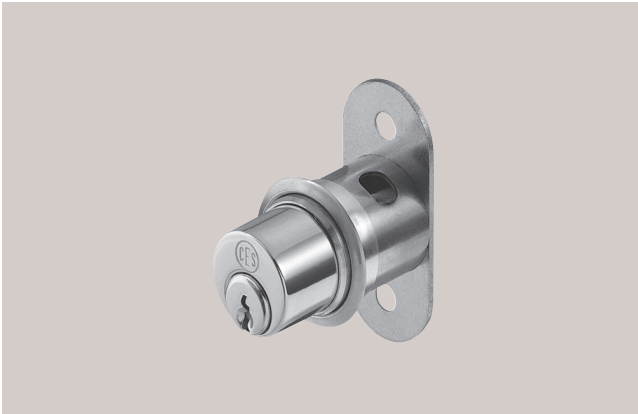


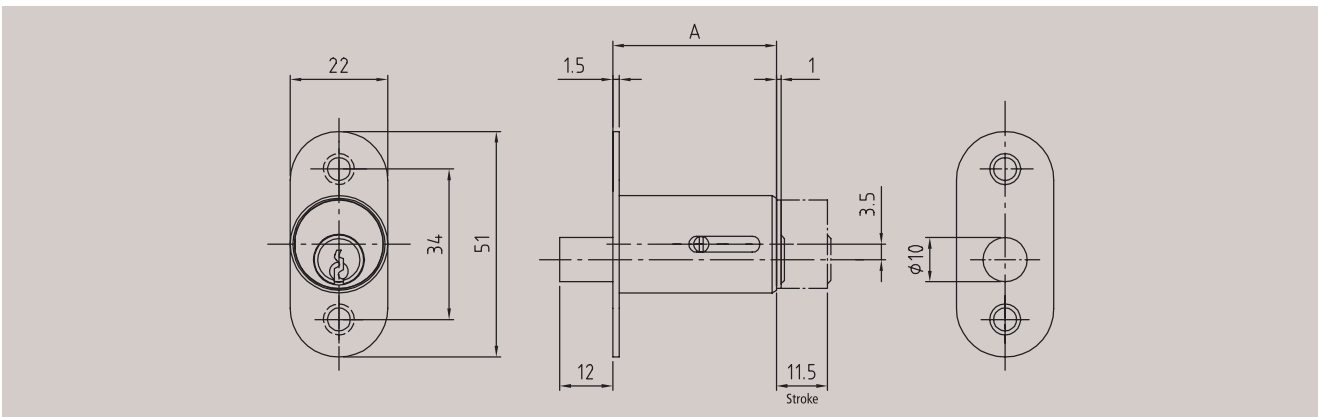
Article 5269

Push cylinder



Technical data

Material	Brass
Finish	Brass, satin, polished or satin nickel-plated
Pin tumblers	5
Keys in series / locking system	2 / 2
Accessories	Escutcheon
Order specifications	length A = 24mm, 29mm or 37mm



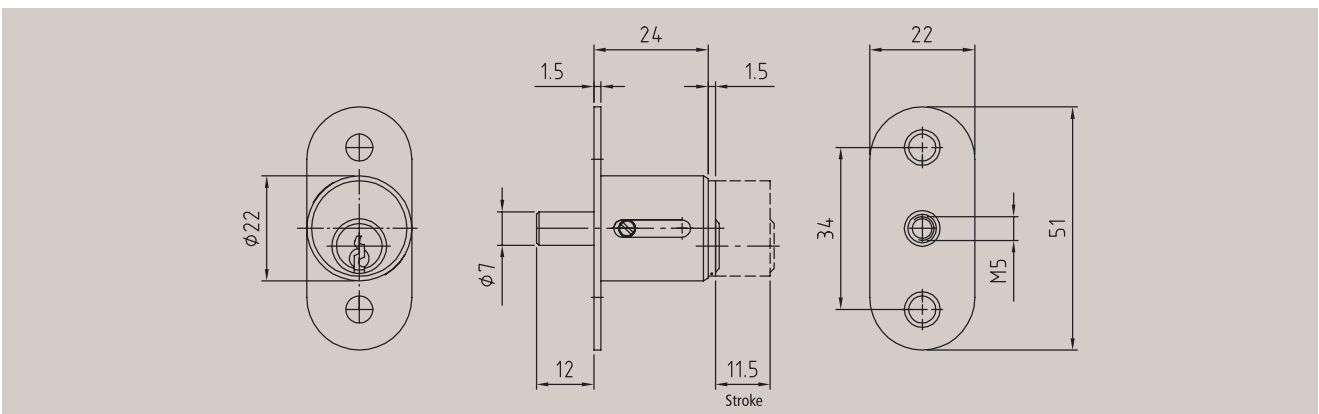
Article 5763

Push cylinder



Technical data

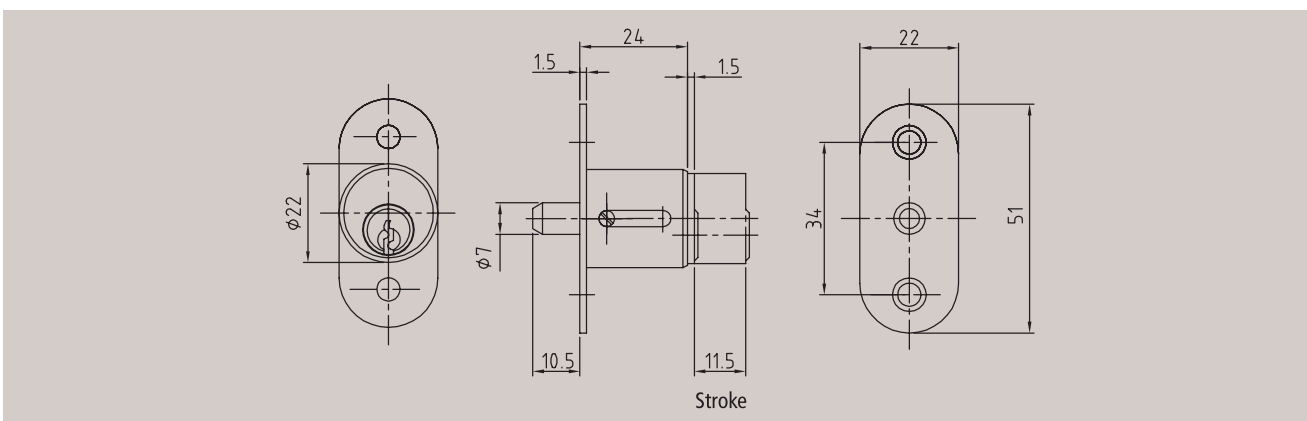
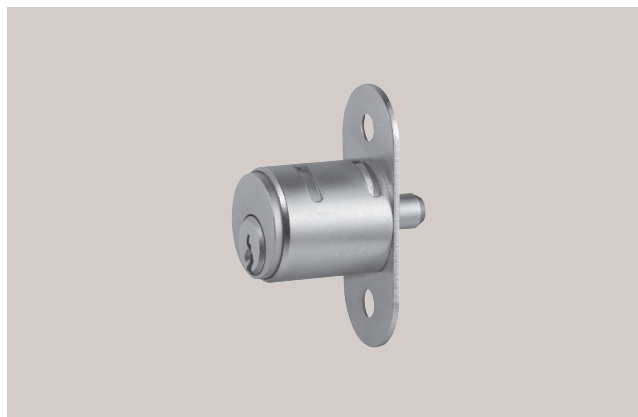
Material	Messing
Finish	Brass, satin nickel-plated
Pin tumblers	5
Keys in series / locking system	2 / 2
Function	Key removable in both positions
Accessories	Escutcheon



Article 5860 Push cylinder

Technical data

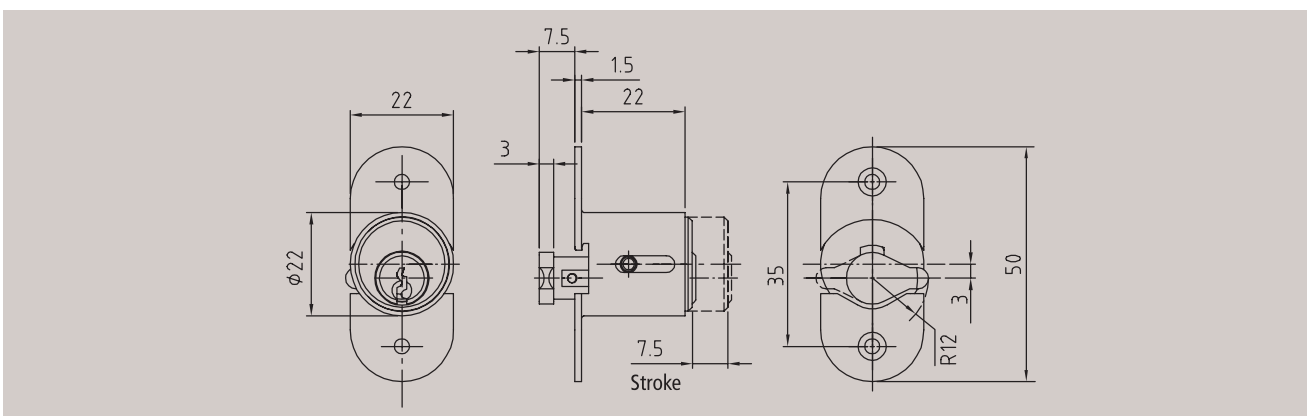
Material	Brass
Finish	Brass, satin nickel-plated
Pin tumblers	5
Keys in series / locking system	2 / 2
Function	Key removable in both positions. Cylinder latches only when locked.
Accessories	Escutcheon



Article 5766 Push cylinder

Technical data

Material	Brass
Finish	Brass, satin nickel-plated
Pin tumblers	5
Keys in series / locking system	2 / 2
Function	Key rotation: 90°.
Accessories	Escutcheon. Striking plate.
Order specifications	Closing direction A or B

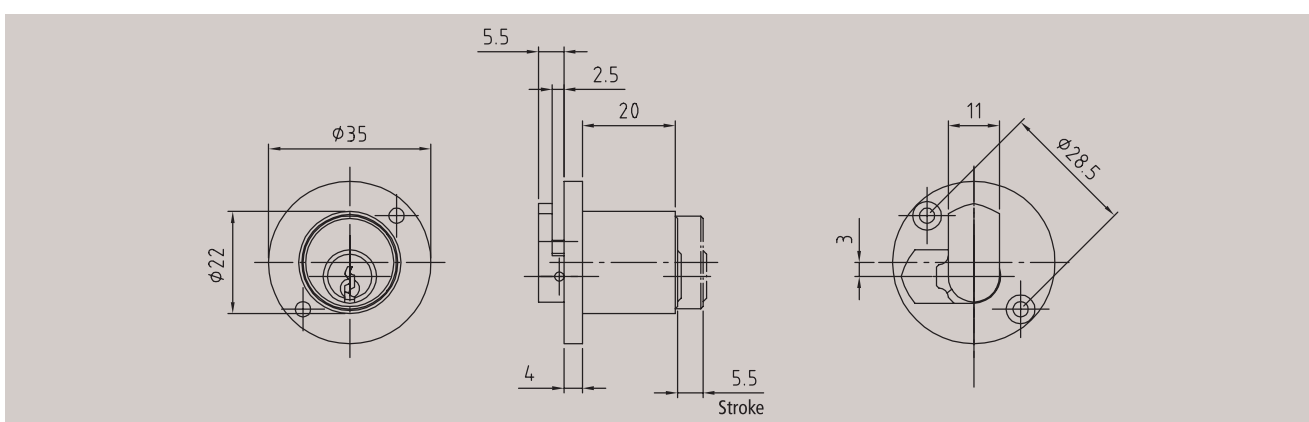


Article 5784 Turn and push cylinder



Technical data

Material	Brass
Finish	Brass, satin nickel-plated
Pin tumblers	5
Keys in series / locking system	2 / 2
Function	Key rotation: 90°. Drawer.
Accessories	Escutcheon

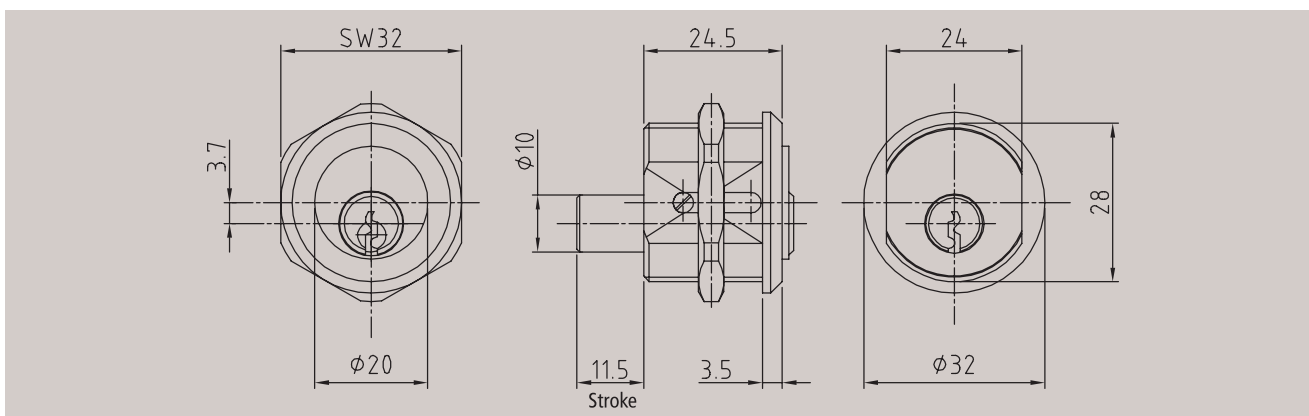


Article 5633 Push cylinder



Technical data

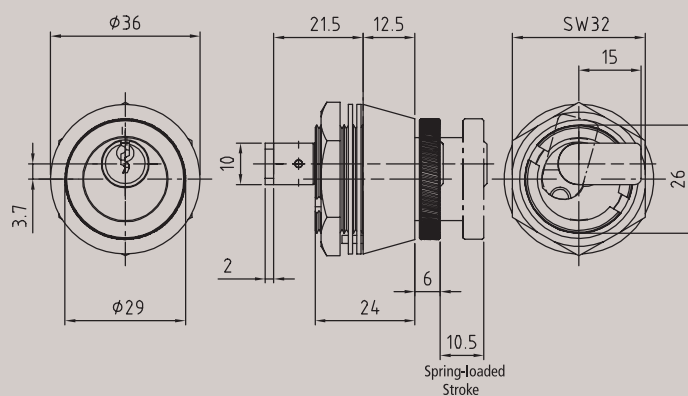
Material	Brass
Finish	Brass, satin nickel-plated
Pin tumblers	5
Keys in series / locking system	2 / 2
Function	Can be locked by pushing in the cylinder (without key).



Article 5647/30 Turn and push cylinder

Technical data

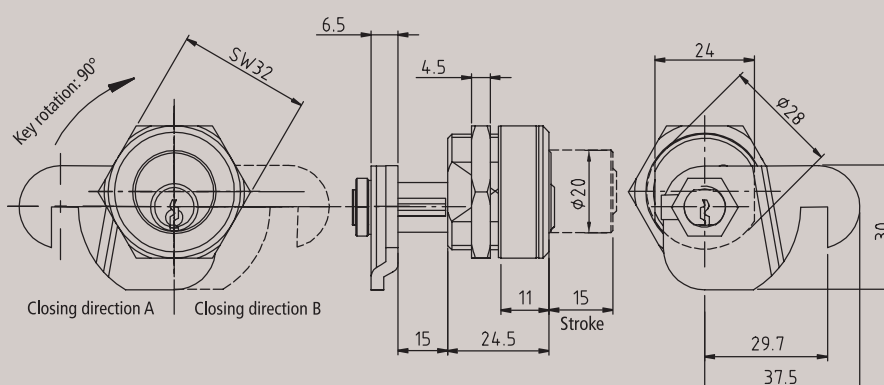
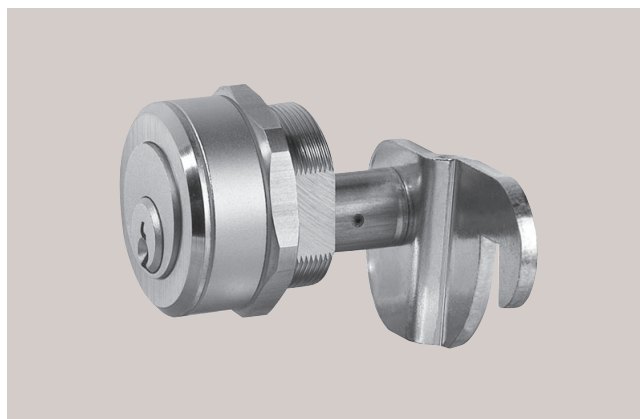
Material	Brass
Finish	Brass, satin chromium-plated
Pin tumblers	5
Keys in series / locking system	2 / 2
Function	Key rotation: 90°. Key removable in both positions. Combined stroke and rotation only with key.



Article 5835/30 Cam push cylinder

Technical data

Material	Brass
Finish	Brass, satin nickel-plated
Pin tumblers	5
Keys in series / locking system	2 / 2
Function	Key rotation: 90°. Key removable in both positions.
Order specifications	Please indicate LH or RH with order.

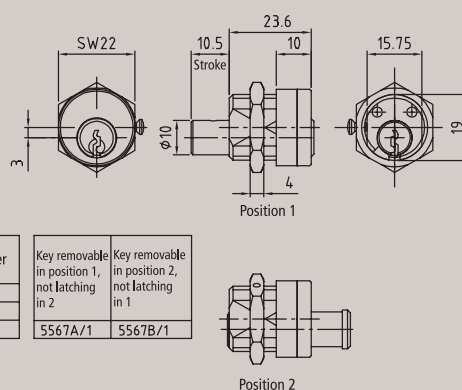


Article 5567 Turn and push cylinder

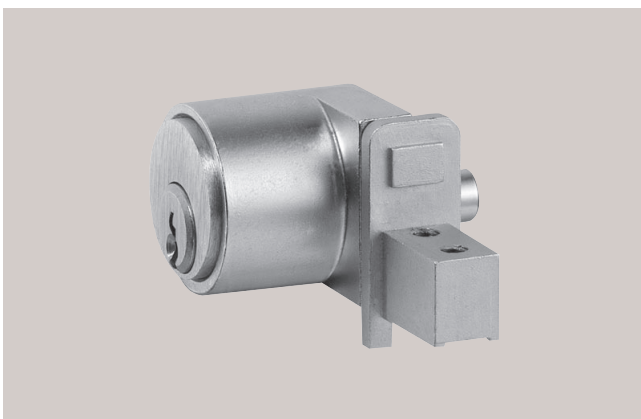


Technical data

Material	Brass
Finish	Brass, polished nickel-plated
Pin tumblers	3
Keys in series / locking system	2 / -
Function	See table.

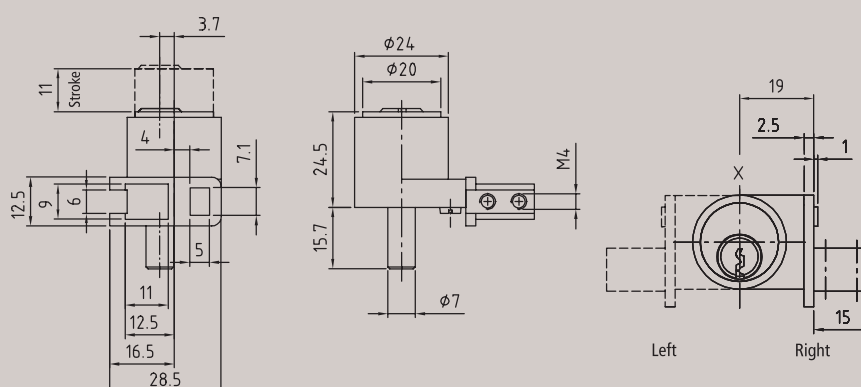


Article 5773 End cap closure for glass doors



Technical data

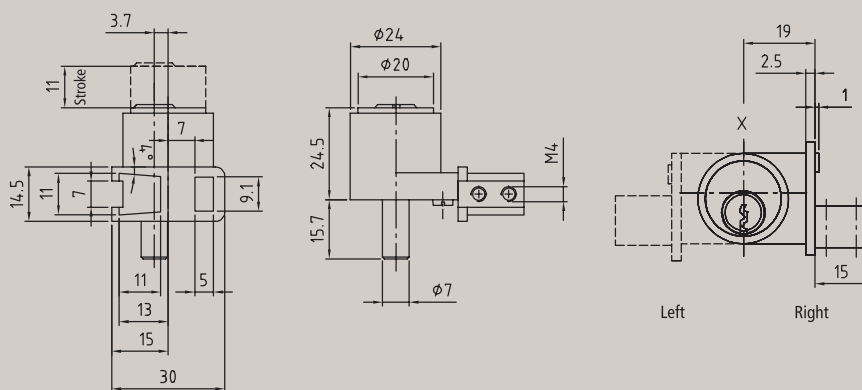
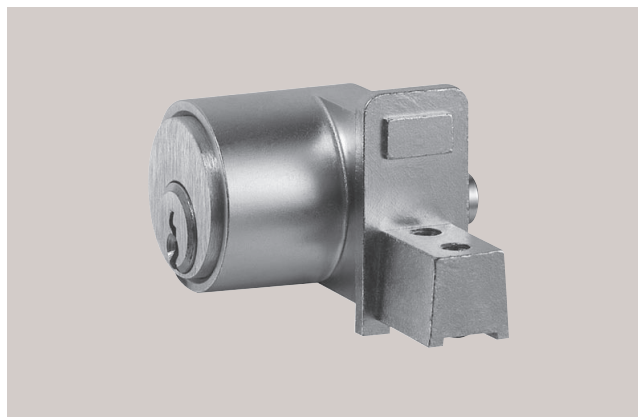
Material	Brass
Finish	Brass, satin chromium-plated
Pin tumblers	5
Keys in series / locking system	2 / 2
Function	Key removable in both positions. Glass thickness 4-6mm.
Order specifications	Please indicate LH or RH with order.



Article 5774 End cap closure for glass doors

Technical data

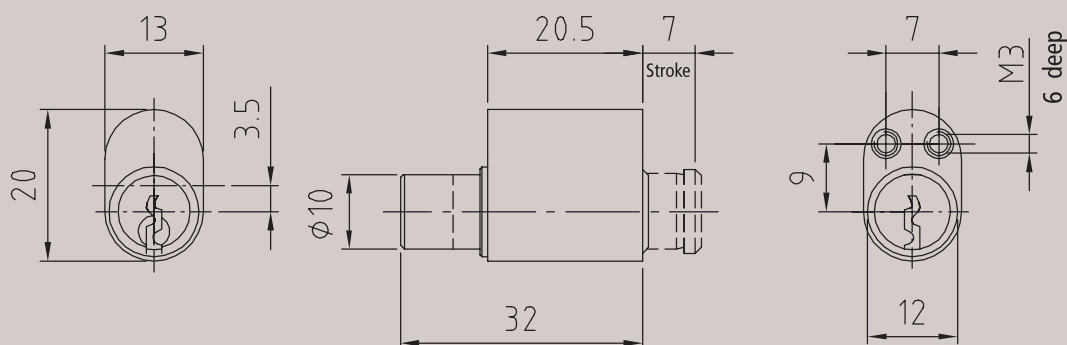
Material	Brass
Finish	Brass, satin chromium-plated
Pin tumblers	5
Keys in series / locking system	2 / 2
Function	Key removable in both positions. Glass thickness 6-8mm.
Order specifications	Please indicate LH or RH with order.



Article 5568 Turn and push cylinder

Technical data

Material	Brass
Finish	Brass, polished nickel-plated
Pin tumblers	3
Keys in series / locking system	2 / -
Function	Key removable in both positions.

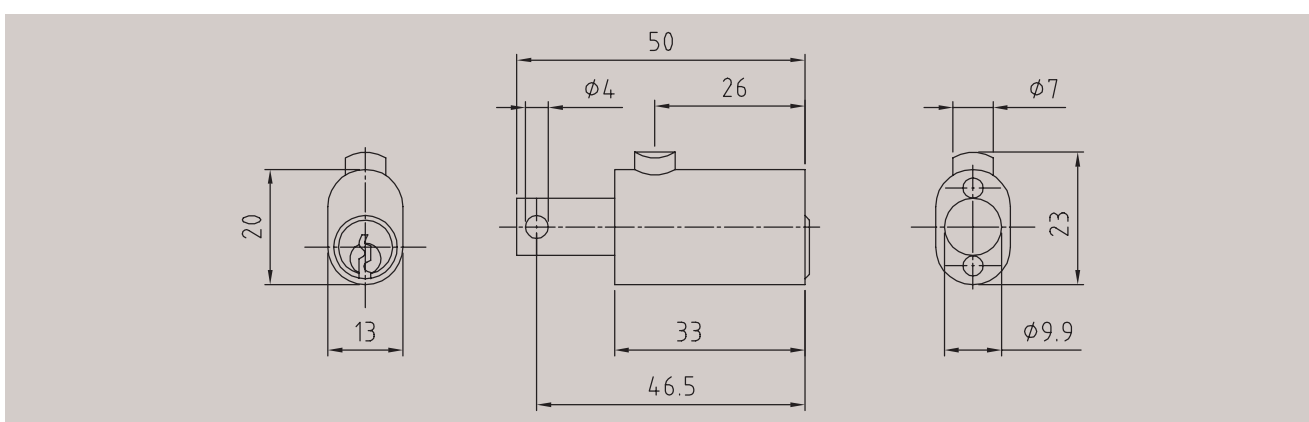


Article 5658/30 Push cylinder



Technical data

Material	Brass
Finish	Brass, satin chromium-plated
Pin tumblers	4
Keys in series / locking system	2 / 2



Article 5888 Push cylinder for window handle



Technical data

Material	Brass
Finish	Brass, satin nickel-plated
Pin tumblers	5
Keys in series / locking system	2 / -
Function	Key removable in both positions.

