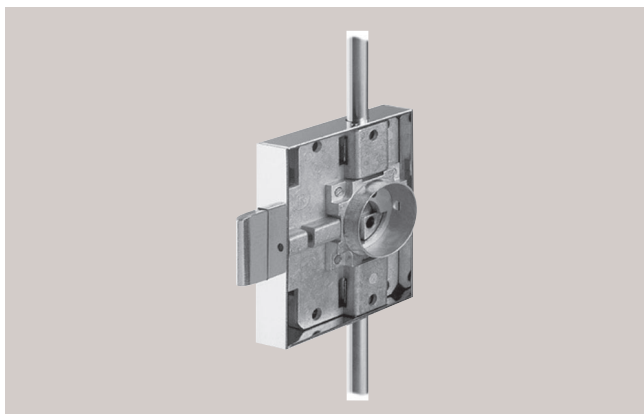


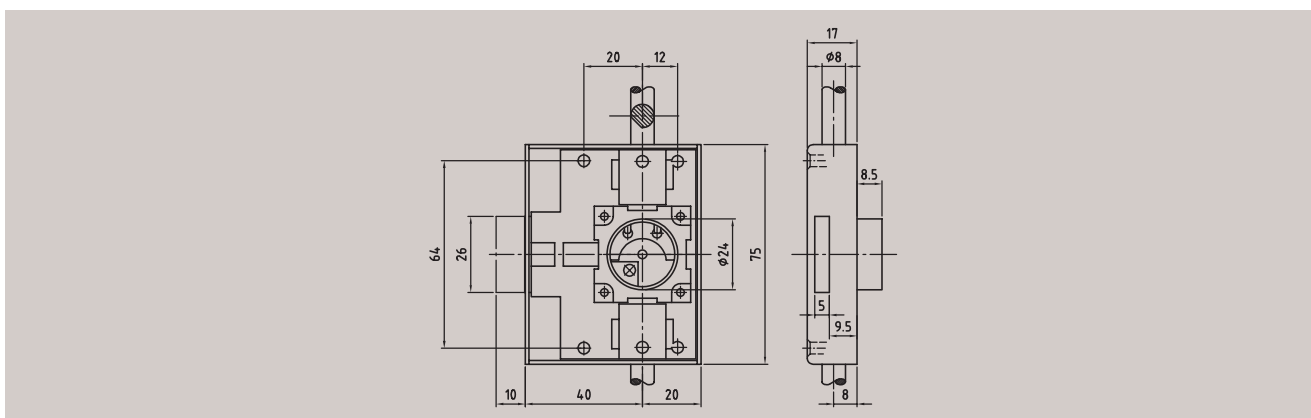
## Article 3002

## Espagnolette lock



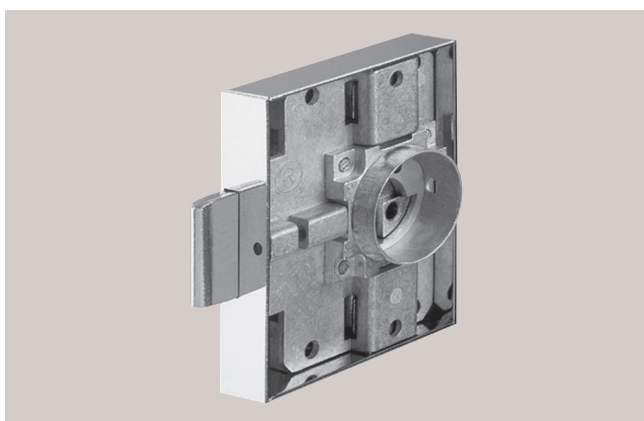
## Technical data

<b>Material</b>	Lock case: steel
<b>Finish</b>	Nickel-plated
<b>Function</b>	For split section rod. For subsequent fitting of cylinder article 222. Including escutcheon. Fitting note: 24mm bore.
<b>Backset</b>	40mm
<b>Accessories</b>	Catch hooks, rod guides, striking plate, locking bolt (without rods)
<b>Order specifications</b>	Figure shows right-hand lock. Please indicate door direction. Available for: RH, LH, drawer, head position.



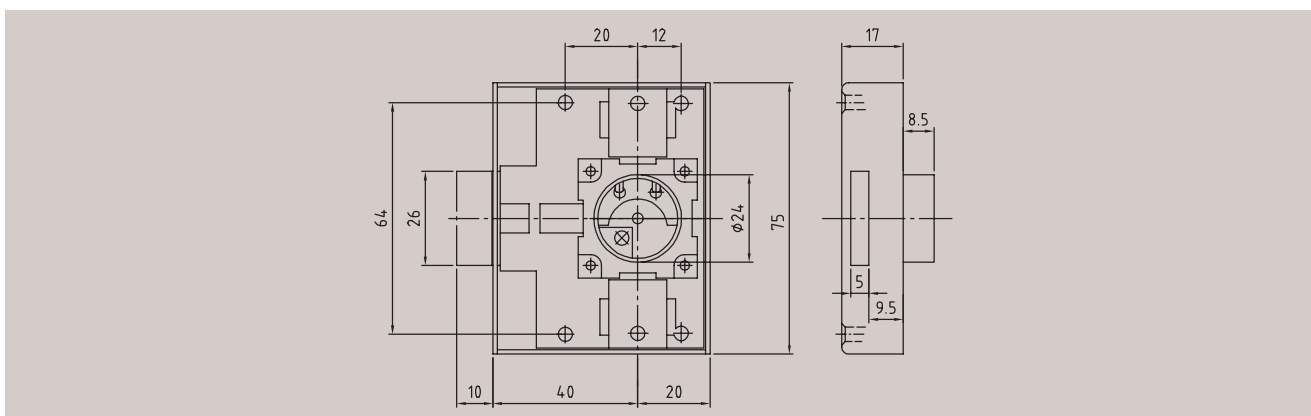
## Article 3012

## Rim lock



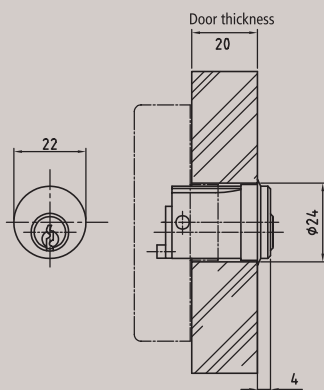
## Technical data

<b>Material</b>	Lock case: steel
<b>Finish</b>	Nickel-plated
<b>Function</b>	For subsequent fitting of cylinder article 222. Fitting note: 24mm bore.
<b>Backset</b>	40mm
<b>Accessories</b>	Nickel-plated angled striking plate
<b>Order specifications</b>	Figure shows right-hand lock. Please indicate door direction. Available for: RH, LH, drawer, head position.

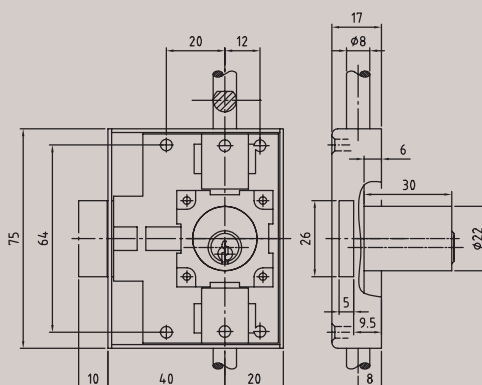
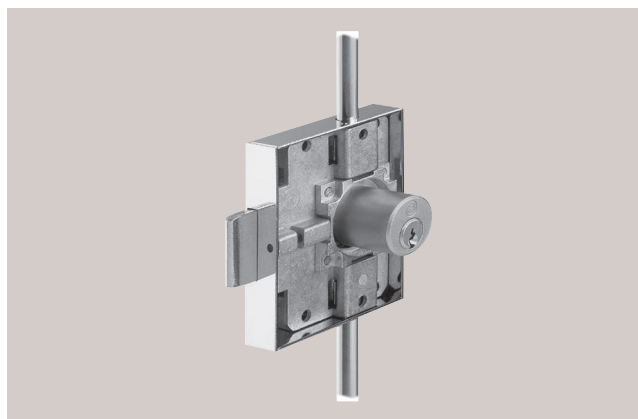


**Article 222**      **Round cylinder**
**Technical data**

<b>Material</b>	Brass
<b>Finish</b>	Brass, satin nickel-plated
<b>Pin tumblers</b>	5
<b>Keys in series / locking system</b>	2 / 2
<b>Function</b>	For locks article 3002, 3012. Max. door thickness 23mm.
<b>Accessories</b>	Escutcheon

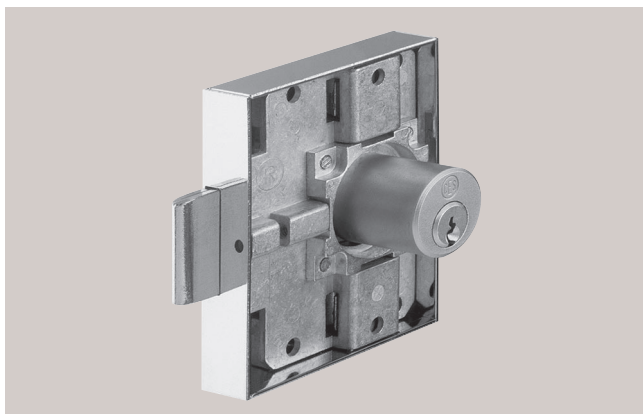

**Article 3001**      **Espagnolette lock**
**Technical data**

<b>Material</b>	Cylinder: brass. Lock case: steel.
<b>Finish</b>	Cylinder: brass, satin nickel-plated. Lock case: steel, nickel-plated.
<b>Pin tumblers</b>	5
<b>Keys in series / locking system</b>	2 / 2
<b>Function</b>	Including cylinder article 122.
<b>Backset</b>	40mm
<b>Accessories</b>	Catch hooks, rod guides, striking plate, locking bolt (without rods)
<b>Order specifications</b>	Figure shows right-hand lock. Please indicate door direction and thickness. Available for: RH, LH, drawer, head position.



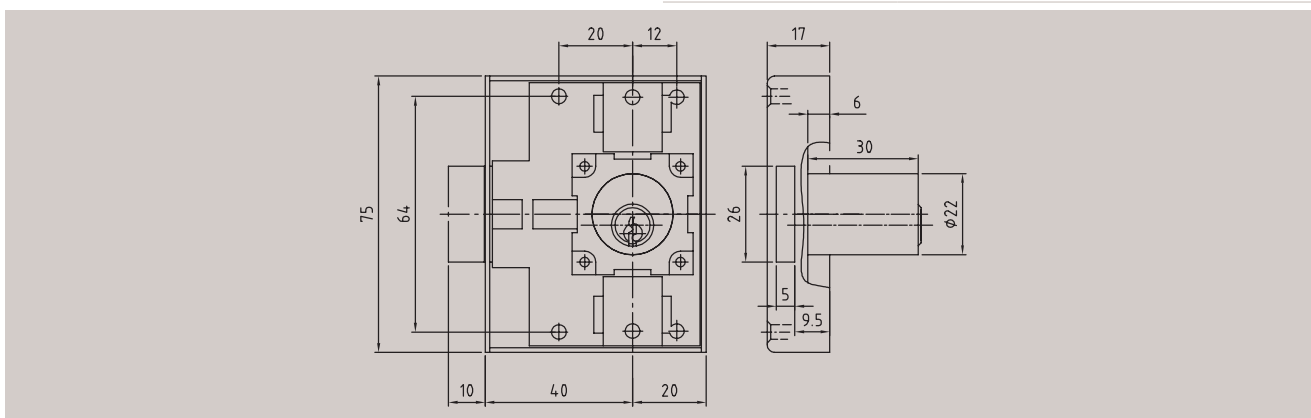
## Article 3011

## Rim lock



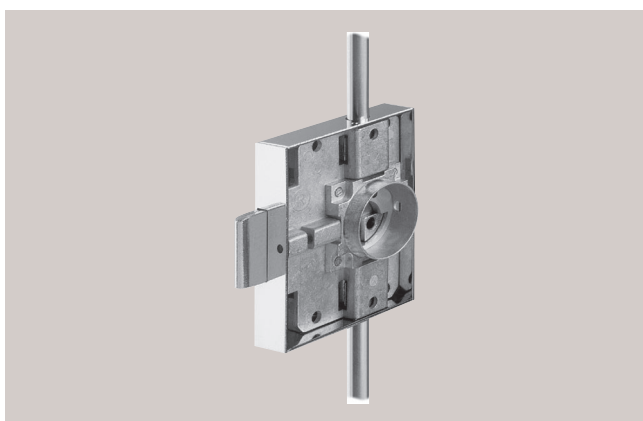
## Technical data

<b>Material</b>	Cylinder: brass. Lock case: steel.
<b>Finish</b>	Cylinder: brass, satin nickel-plated. Lock case steel, nickel-plated.
<b>Pin tumblers</b>	5
<b>Keys in series / locking system</b>	2 / 2
<b>Function</b>	Including cylinder article 122.
<b>Backset</b>	40mm
<b>Accessories</b>	Nickel-plated angled striking plate
<b>Order specifications</b>	Figure shows right-hand lock. Please indicate door direction and thickness. Available for: RH, LH, drawer, head position.



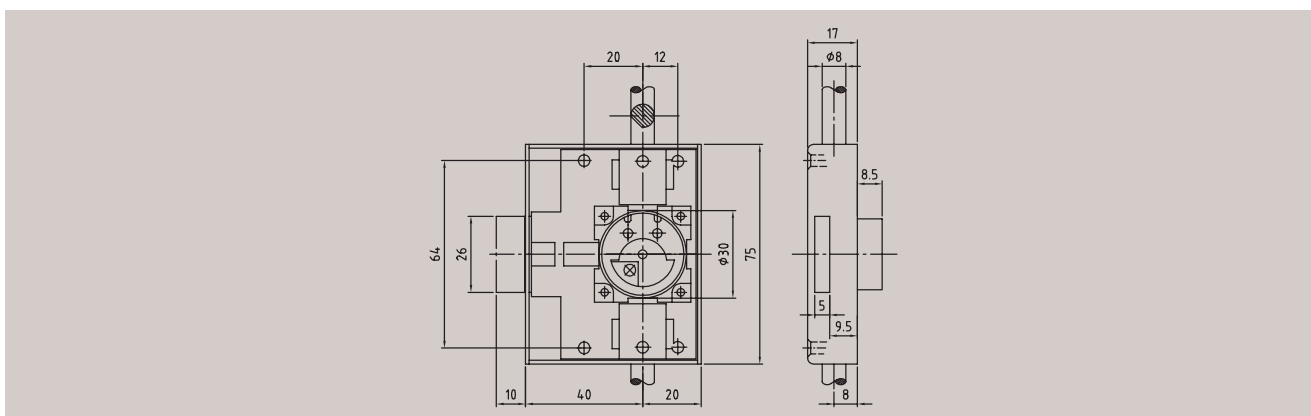
## Article 3003

## Espagnolette lock



## Technical data

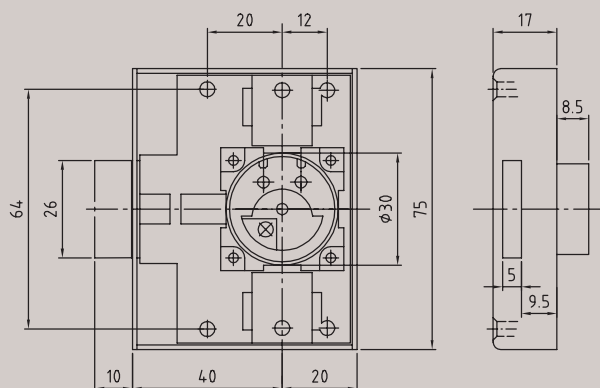
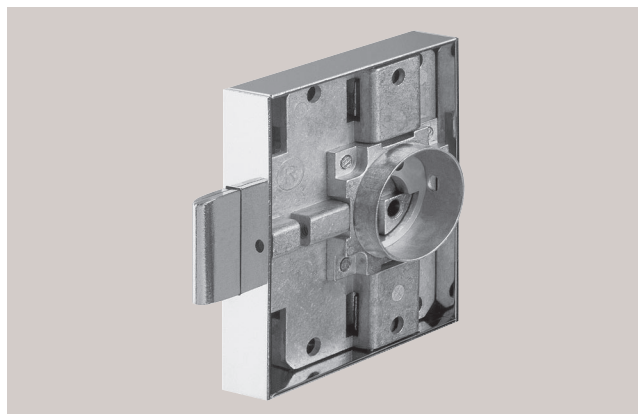
<b>Material</b>	Lock case: steel
<b>Finish</b>	Lock case: steel, nickel-plated
<b>Function</b>	For split section rod. For subsequent fitting of olive article 6036, 6037, 6038, cylinder article 328. Including escutcheon. Fitting note: 30mm bore.
<b>Backset</b>	40mm
<b>Accessories</b>	Catch hooks, rod guides, striking plate, locking bolt (without rods)
<b>Order specifications</b>	Figure shows right-hand lock. Please indicate door direction. Available for: RH, LH, drawer, head position.



## Article 3013 Rim lock

### Technical data

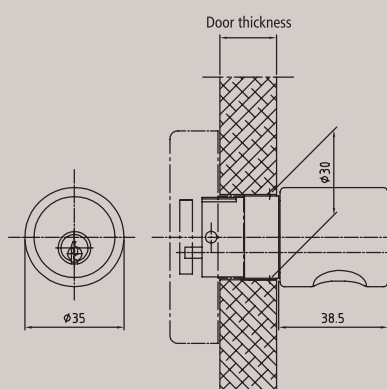
<b>Material</b>	Lock case: steel
<b>Finish</b>	Lock case: steel, nickel-plated
<b>Function</b>	For subsequent fitting of olives article 6036, 6037, 6038, cylinder article 328. Fitting note: 30mm bore.
<b>Backset</b>	40mm
<b>Accessories</b>	Nickel-plated angled striking plate
<b>Order specifications</b>	Figure shows right-hand lock. Please indicate door direction. Available for: RH, LH, drawer, head position.



## Article 6036 Olive with cylinder

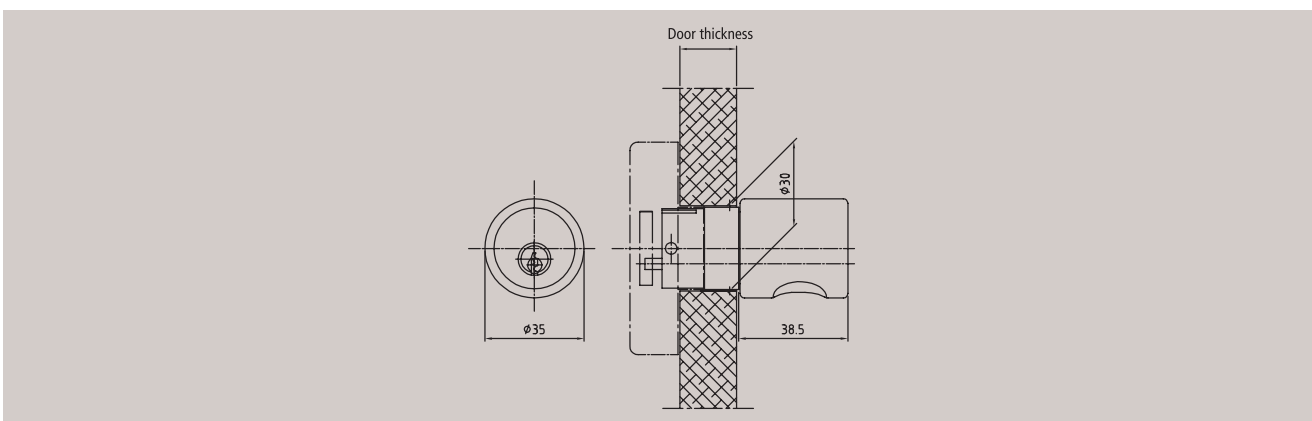
### Technical data

<b>Material</b>	Cylinder: brass. Housing: Zamak Z 410.
<b>Finish</b>	Velvet chromium-plated
<b>Pin tumblers</b>	5
<b>Keys in series / locking system</b>	2 / 2
<b>Function</b>	With rigid dead bolt. For locks part no. 3003, 3013. Door thickness 20mm. Door thickness 25, 30mm upon request.
<b>Order specifications</b>	Please indicate door direction and thickness.

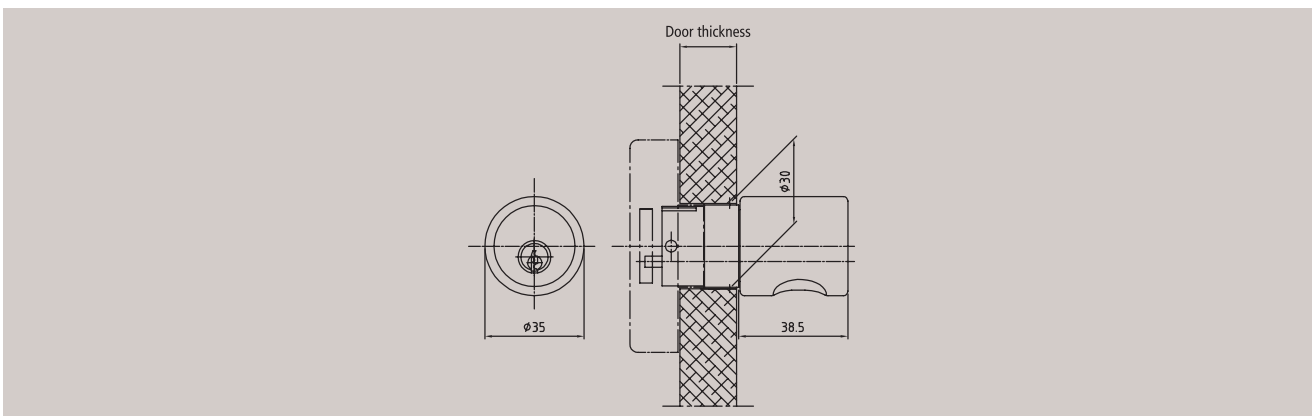


**Article 6036/31 Olive with cylinder**


Technical data	
<b>Material</b>	Cylinder: brass. Housing: Zamak Z 410.
<b>Finish</b>	Velvet chromium-plated
<b>Pin tumblers</b>	5
<b>Keys in series / locking system</b>	2 / 2
<b>Function</b>	With spring mounted dead bolt. For locks article 3003, 3013.
<b>Order specifications</b>	Please indicate door direction and thickness. Door thickness 20mm. Door thickness 25, 30mm upon request.

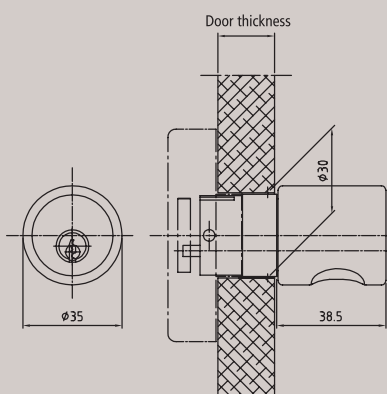

**Article 6036/40 Olive with cylinder**


Technical data	
<b>Material</b>	Cylinder: brass. Housing: nylon.
<b>Finish</b>	HEWI colors
<b>Pin tumblers</b>	5
<b>Keys in series / locking system</b>	2 / 2
<b>Function</b>	With rigid dead bolt. For locks article 3003, 3013. Door thickness 20mm. Door thickness 25, 30mm upon request.
<b>Order specifications</b>	Please indicate door direction and thickness.

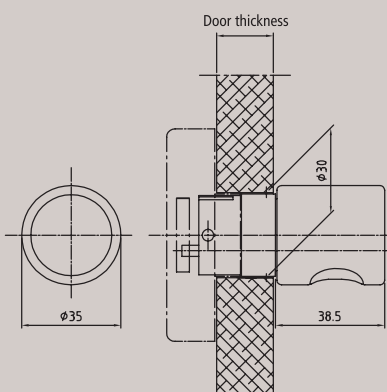


**Article 6036/41 Olive with cylinder**
**Technical data**

<b>Material</b>	Cylinder: brass. Housing: nylon.
<b>Finish</b>	HEWI colors
<b>Pin tumblers</b>	5
<b>Keys in series / locking system</b>	2 / 2
<b>Function</b>	With spring mounted dead bolt. For locks article 3003, 3013. Door thickness 20mm. Door thickness 25, 30mm upon request.
<b>Order specifications</b>	Please indicate door direction and thickness.


**Article 6038 Olive without cylinder**
**Technical data**

<b>Material</b>	Zamak Z 410
<b>Finish</b>	Velvet chromium-plated
<b>Function</b>	Rotating. For locks article 3003, 3013. Door thickness 20mm. Door thickness 25, 30mm upon request.

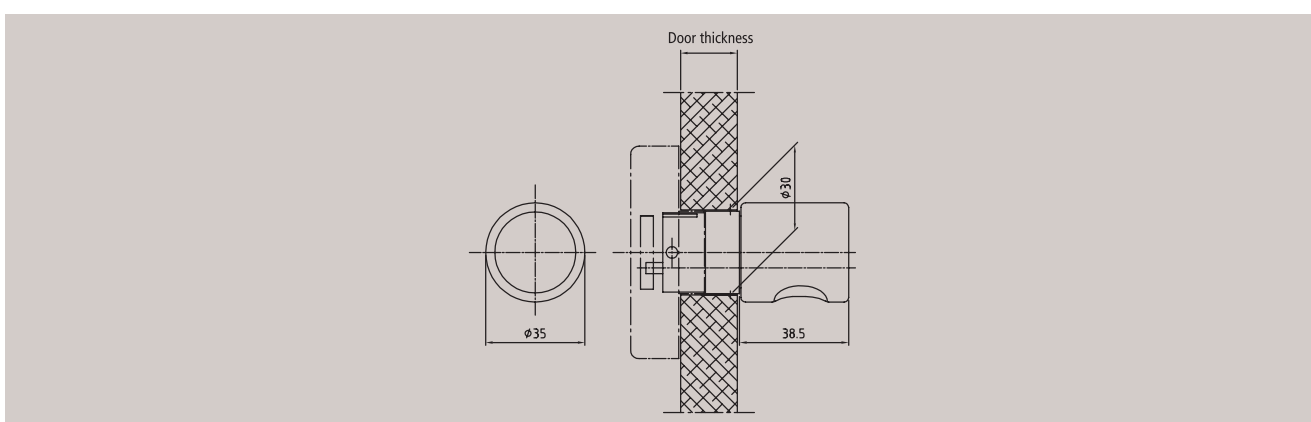


# Article 6038/40 Olive without cylinder



## Technical data

<b>Material</b>	Nylon
<b>Finish</b>	HEWI colors
<b>Function</b>	Rotating. For locks article 3003, 3013. Door thickness 20mm. Door thickness 25, 30mm upon request.

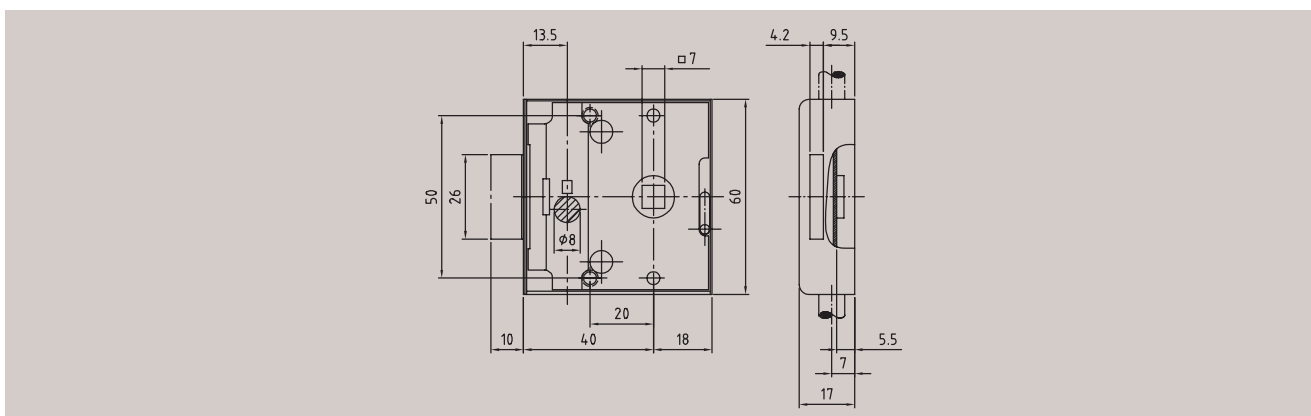


# Article 4900 Espagnolette lock



## Technical data

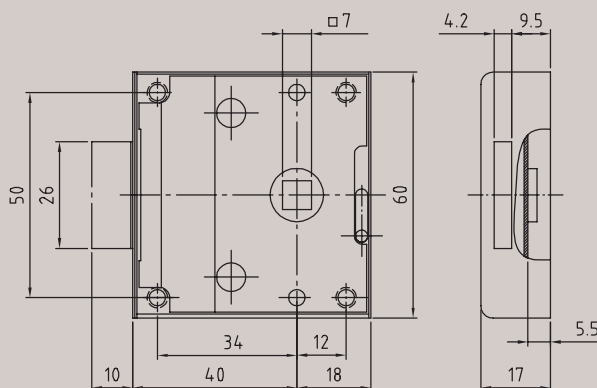
<b>Material</b>	Lock case: steel
<b>Finish</b>	Lock case steel, nickel-plated
<b>Function</b>	For right- or left-hand application. For subsequent fitting of olive article 5836, 5837, 5838, 5839.
<b>Backset</b>	40mm
<b>Accessories</b>	Catch hooks, rod guides, striking plate, locking bolt (without rods)
<b>Order specifications</b>	Figure shows right-hand lock.



## Article 4901 Rim lock for furniture

### Technical data

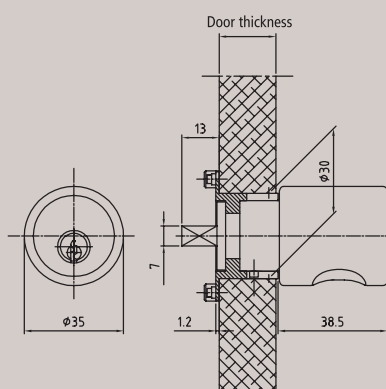
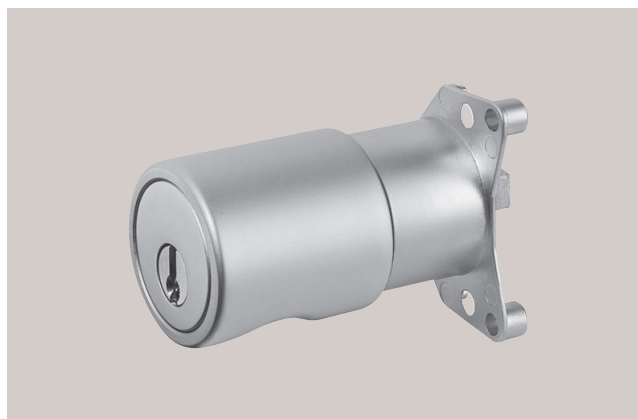
<b>Material</b>	Lock case: steel
<b>Finish</b>	Lock case: steel, nickel-plated
<b>Function</b>	For right- or left-hand application. For subsequent fitting of olive article 5836, 5837, 5838, 5839.
<b>Backset</b>	40mm
<b>Accessories</b>	Nickel-plated angled striking plate
<b>Order specifications</b>	Figure shows right-hand lock.

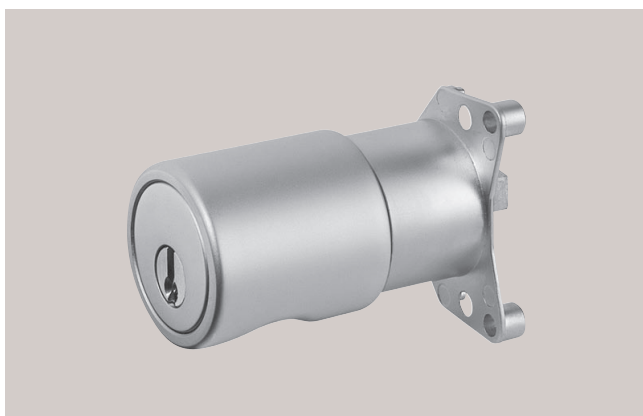


## Article 5836 Olive with cylinder

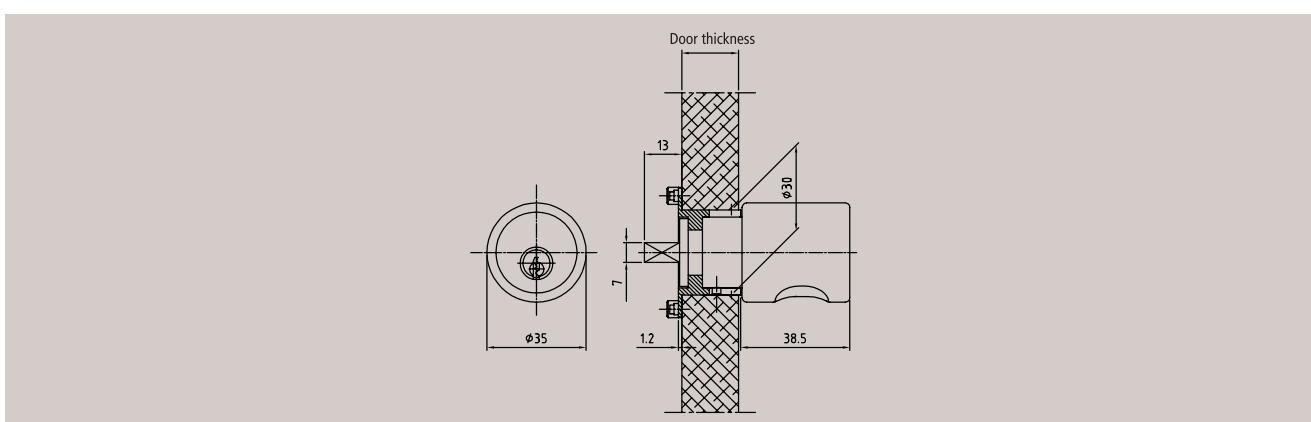
### Technical data

<b>Material</b>	Cylinder: brass. Housing: Zamak Z 410.
<b>Finish</b>	Velvet chromium-plated
<b>Pin tumblers</b>	5
<b>Keys in series / locking system</b>	2 / 2
<b>Function</b>	With rigid dead bolt. For locks article 4900, 4901. Door thickness 20mm. Door thickness 25, 30mm upon request.
<b>Accessories</b>	Escutcheon, adapter
<b>Order specifications</b>	Please indicate door direction and thickness.

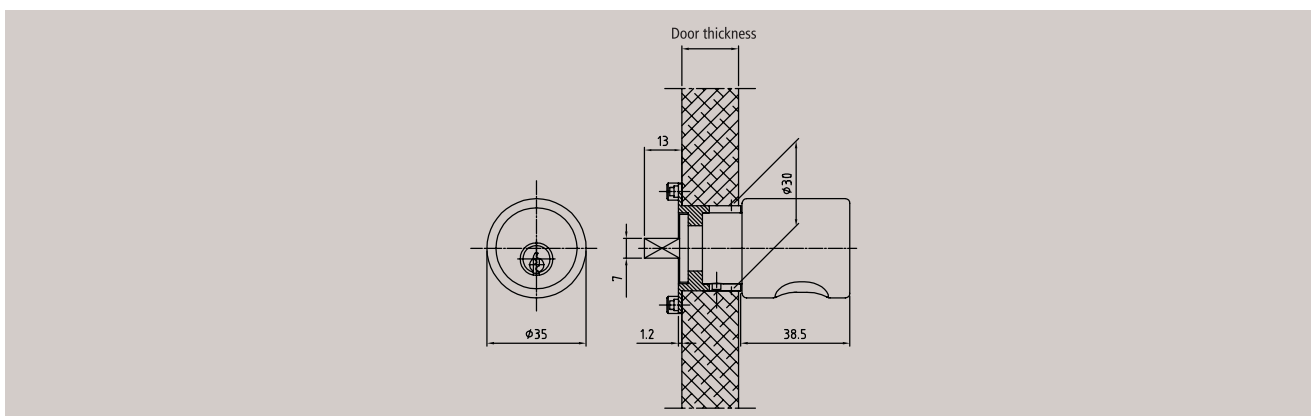


**Article 5836/31 Olive with cylinder**


Technical data	
<b>Material</b>	Cylinder: brass. Housing: Zamak Z 410.
<b>Finish</b>	Velvet chromium-plated
<b>Pin tumblers</b>	5
<b>Keys in series / locking system</b>	2 / 2
<b>Function</b>	With spring mounted dead bolt. For locks article 4900, 4901. Door thickness 20mm. Door thickness 25, 30mm upon request.
<b>Accessories</b>	Escutcheon, adapter
<b>Order specifications</b>	Please indicate door direction and thickness.

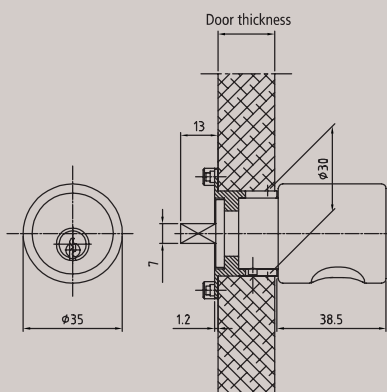

**Article 5836/40 Olive with cylinder**


Technical data	
<b>Material</b>	Cylinder: brass. Housing: nylon.
<b>Finish</b>	HEWI colors
<b>Pin tumblers</b>	5
<b>Keys in series / locking system</b>	2 / 2
<b>Function</b>	With rigid dead bolt. For locks article 4900, 4901. Door thickness 20mm. Door thickness 25, 30mm upon request.
<b>Accessories</b>	Escutcheon, adapter
<b>Order specifications</b>	Please indicate door direction and thickness.

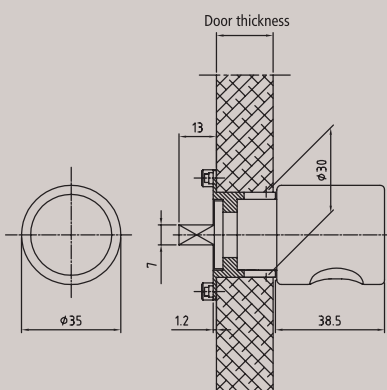


**Article 5836/41 Olive with cylinder**
**Technical data**

<b>Material</b>	Cylinder: brass. Housing: nylon.
<b>Finish</b>	HEWI colors
<b>Pin tumblers</b>	5
<b>Keys in series / locking system</b>	2 / 2
<b>Function</b>	With spring mounted dead bolt. For locks article 4900, 4901. Door thickness 20mm. Door thickness 25, 30mm upon request.
<b>Accessories</b>	Escutcheon, adapter
<b>Order specifications</b>	Please indicate door direction and thickness.


**Article 5838 Olive without cylinder**
**Technical data**

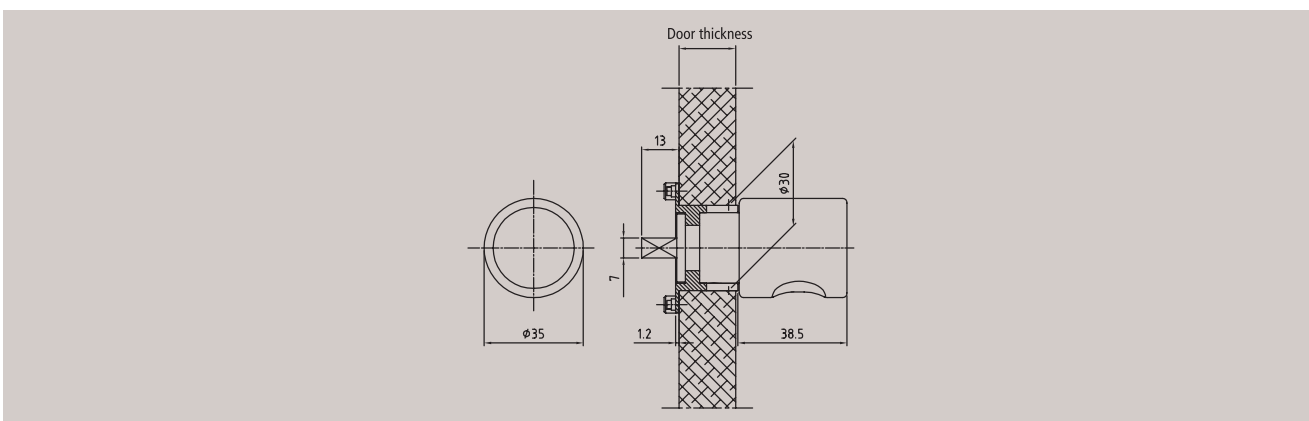
<b>Material</b>	Zamak Z 410
<b>Finish</b>	Velvet chromium-plated
<b>Function</b>	Rotating. For locks article 4900, 4901. Door thickness 20mm. Door thickness 25, 30mm upon request.
<b>Accessories</b>	Escutcheon, adapter



**Article 5838/40 Olive without cylinder**

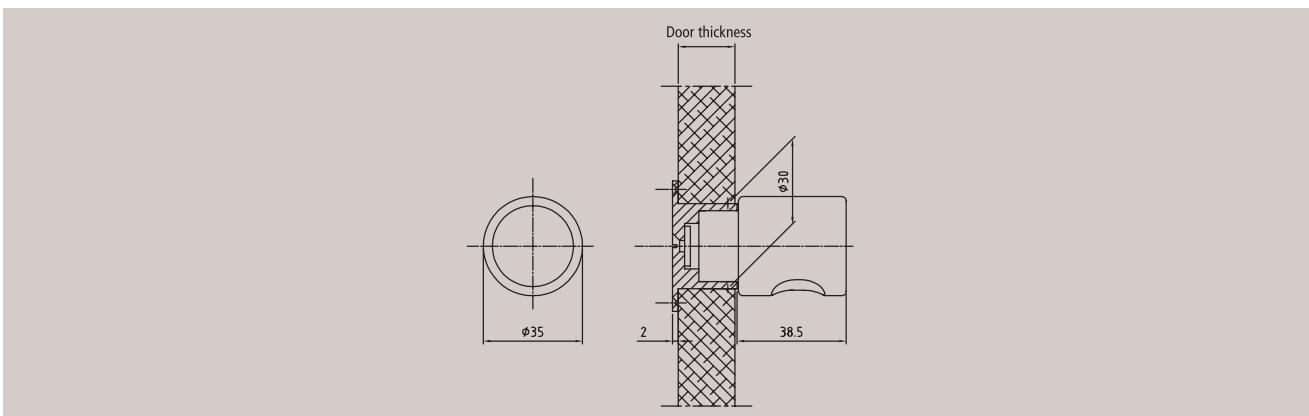
**Technical data**

<b>Material</b>	Nylon
<b>Finish</b>	HEWI colors
<b>Function</b>	Rotating. For locks article 4900, 4901. Door thickness 20mm. Door thickness 25, 30mm upon request.
<b>Accessories</b>	Escutcheon, adapter


**Article 5839 Olive without cylinder**

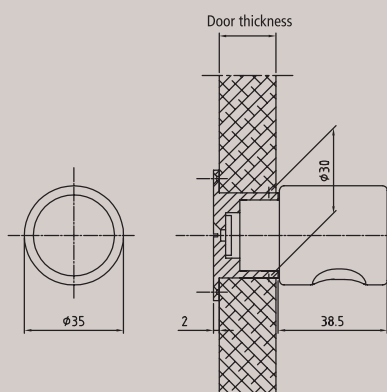
**Technical data**

<b>Material</b>	Zamak Z 410
<b>Finish</b>	Velvet chromium-plated
<b>Function</b>	Fixed. Door thickness 20mm. Door thickness 25, 30mm upon request.
<b>Accessories</b>	Escutcheon



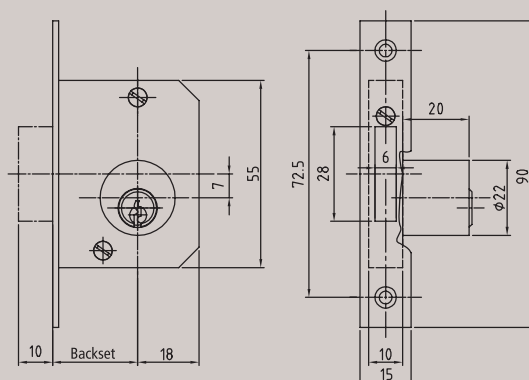
**Article 5839/40 Olive without cylinder**

Technical data	
<b>Material</b>	Nylon
<b>Finish</b>	HEWI colors
<b>Function</b>	Fixed. Door thickness 20mm. Door thickness 25, 30mm upon request.
<b>Accessories</b>	Escutcheon



**Article 4141 Mortise lock for furniture**

Technical data	
<b>Material</b>	Cylinder: brass. Lock case: steel.
<b>Finish</b>	Cylinder: brass, satin nickel-plated. Lock case: steel, bright.
<b>Pin tumblers</b>	5
<b>Keys in series / locking system</b>	2 / 2
<b>Function</b>	Length with cylinder 20mm, further lengths upon request. RH, LH, drawer, head position.
<b>Backset</b>	25-40mm
<b>Accessories</b>	Escutcheon
<b>Order specifications</b>	Figure shows right-hand lock.



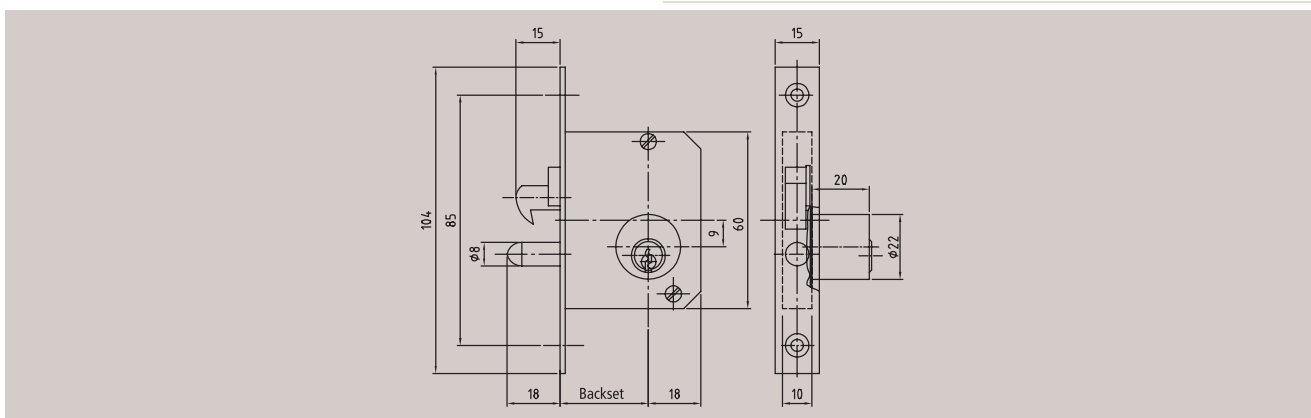
## Article 4177

## Mortise lock for roller shutters



## Technical data

<b>Material</b>	Cylinder: brass. Lock case: steel.
<b>Finish</b>	Cylinder: brass, satin nickel-plated. Lock case: steel, bright.
<b>Pin tumblers</b>	5
<b>Keys in series / locking system</b>	2 / 2
<b>Function</b>	Length with cylinder 20mm, further lengths upon request. RH, LH, drawer, head position.
<b>Backset</b>	20-40mm
<b>Accessories</b>	Escutcheon, striking plate.
<b>Order specifications</b>	Figure shows right-hand lock.



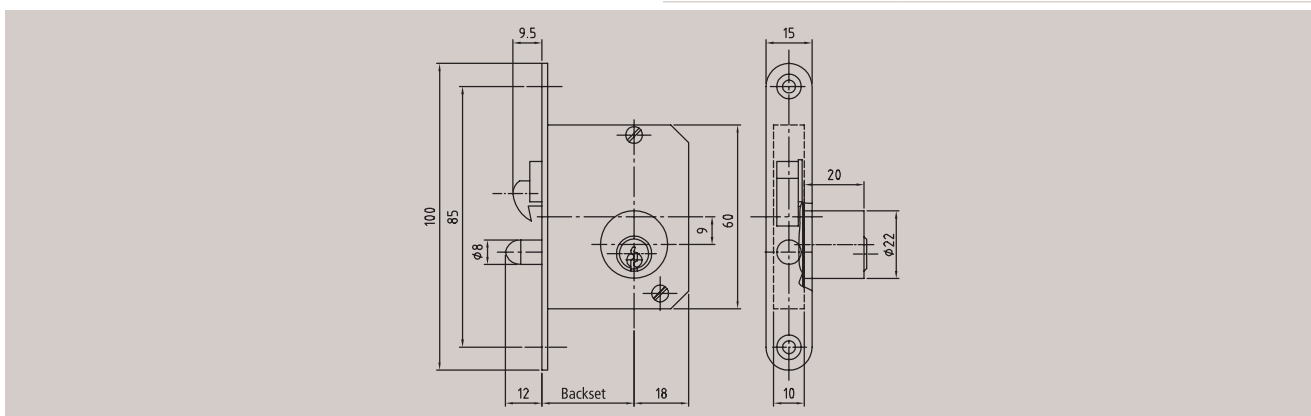
## Article 4177/30

## Mortise lock for roller shutters



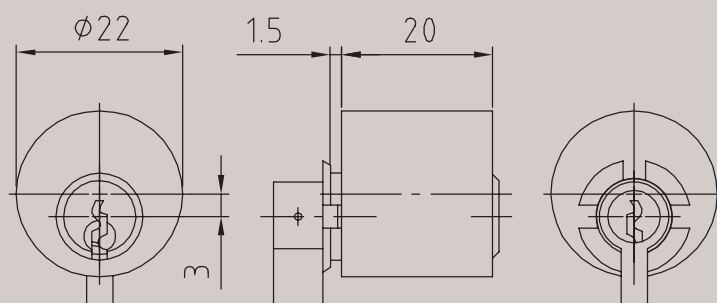
## Technical data

<b>Material</b>	Cylinder: brass. Lock case: steel.
<b>Finish</b>	Cylinder: brass, satin nickel-plated. Lock case: steel, bright.
<b>Pin tumblers</b>	5
<b>Keys in series / locking system</b>	2 / 2
<b>Function</b>	Length with cylinder 20mm, further lengths upon request. RH, LH, drawer, head position.
<b>Backset</b>	25mm
<b>Accessories</b>	Escutcheon, striking plate.
<b>Order specifications</b>	Figure shows right-hand lock.

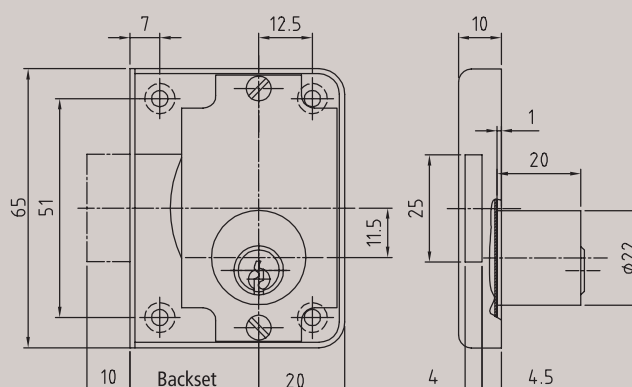


**Article to 4141, 4177 Round cylinder**
**Technical data**

<b>Material</b>	Brass
<b>Finish</b>	Brass, satin nickel-plated
<b>Pin tumblers</b>	5
<b>Keys in series / locking system</b>	2 / 2
<b>Function</b>	Spare cylinder for article 4141, 4177. Length 20mm, further lengths upon request.
<b>Accessories</b>	(without escutcheon)


**Article 4146 Rim lock for furniture**
**Technical data**

<b>Material</b>	Cylinder: brass. Lock case: steel.
<b>Finish</b>	Cylinder: brass, satin nickel-plated. Lock case: steel, bright.
<b>Pin tumblers</b>	5
<b>Keys in series / locking system</b>	2 / 2
<b>Function</b>	Length with cylinder 20mm, further lengths upon request.
<b>Backset</b>	20-40mm
<b>Accessories</b>	Escutcheon
<b>Order specifications</b>	Figure shows right-hand lock. Available for: RH, LH, drawer, head position.



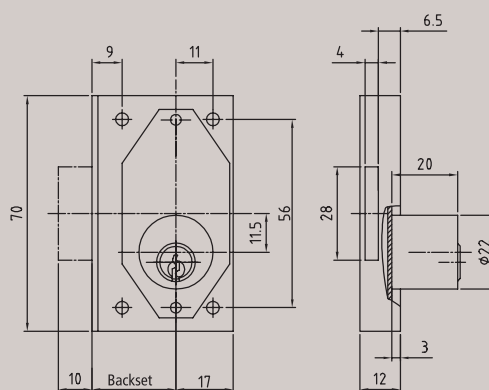
## Article 4155

## Inlaid lock



## Technical data

<b>Material</b>	Cylinder: brass. Lock case: steel.
<b>Finish</b>	Cylinder: brass, satin nickel-plated. Lock case: steel, nickel-plated.
<b>Pin tumblers</b>	5
<b>Keys in series / locking system</b>	2 / 2
<b>Function</b>	Length with cylinder 20mm, further lengths upon request.
<b>Backset</b>	20-40mm
<b>Accessories</b>	Escutcheon
<b>Order specifications</b>	Figure shows right-hand lock. Available for: RH, LH, drawer, head position.



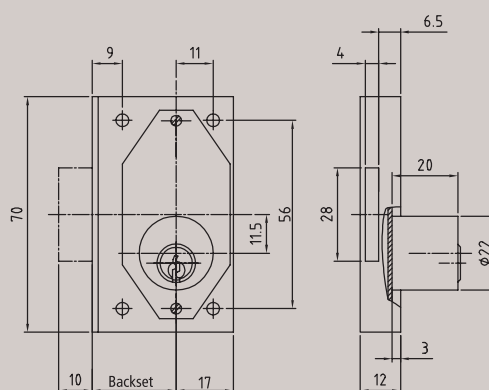
## Article 4158

## Inlaid lock



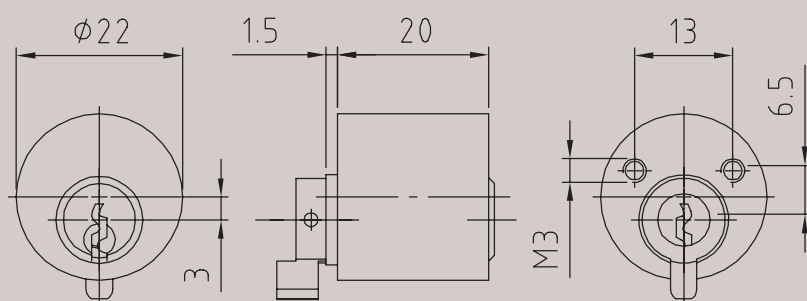
## Technical data

<b>Material</b>	Cylinder: brass. Lock case: brass.
<b>Finish</b>	Cylinder: brass, satin nickel-plated. Lock case: brass, ground
<b>Pin tumblers</b>	5
<b>Keys in series / locking system</b>	2 / 2
<b>Function</b>	Length with cylinder 20mm, further lengths upon request.
<b>Backset</b>	25-40mm
<b>Accessories</b>	Escutcheon
<b>Order specifications</b>	Figure shows right-hand lock. Available for: RH, LH, drawer, head position.

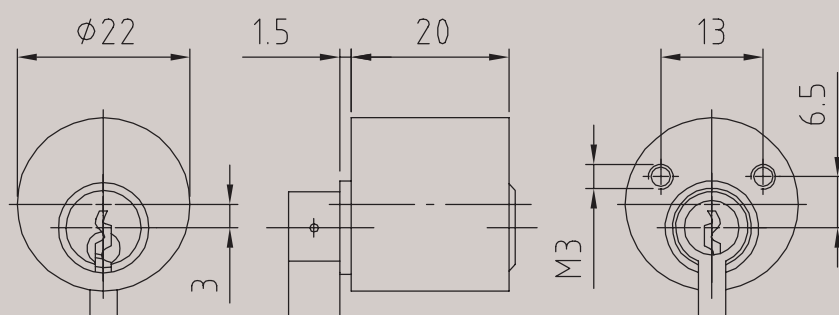


**Article to 4146, 4155 Round cylinder**

Technical data	
Material	Brass
Finish	Brass, satin nickel-plated
Pin tumblers	5
Keys in series / locking system	2 / 2
Function	Spare cylinder for article 4146, 4155. Length 20mm, further lengths upon request.
Accessories	(without escutcheon)


**Article 41 Round cylinder**

Technical data	
Material	Brass
Finish	Brass, satin nickel-plated
Pin tumblers	5
Keys in series / locking system	2 / 2
Function	Length 20mm, further lengths upon request.
Accessories	(without escutcheon) follower part no. 95004, other follower shapes upon request.



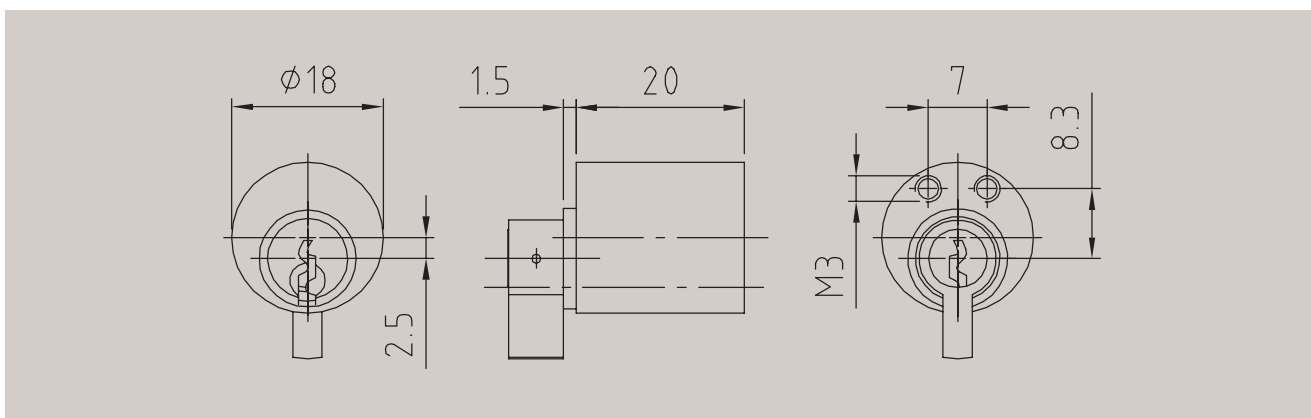
## Article 42

## Round cylinder



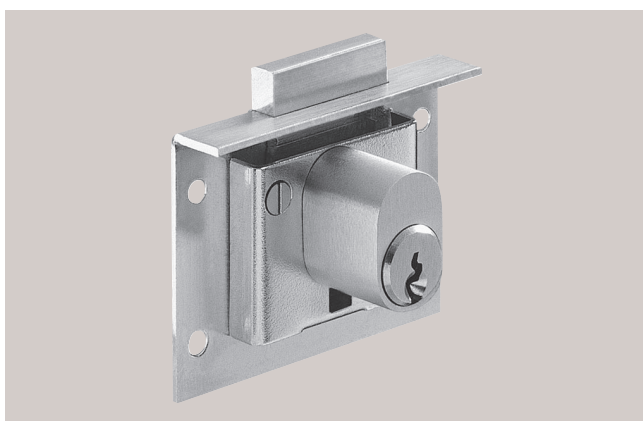
## Technical data

Material	Brass
Finish	Brass, satin nickel-plated
Pin tumblers	5
Keys in series / locking system	2 / 2
Function	Length 20mm, further lengths upon request.
Accessories	(without escutcheon) Follower part no. 95004, other follower shapes upon request.



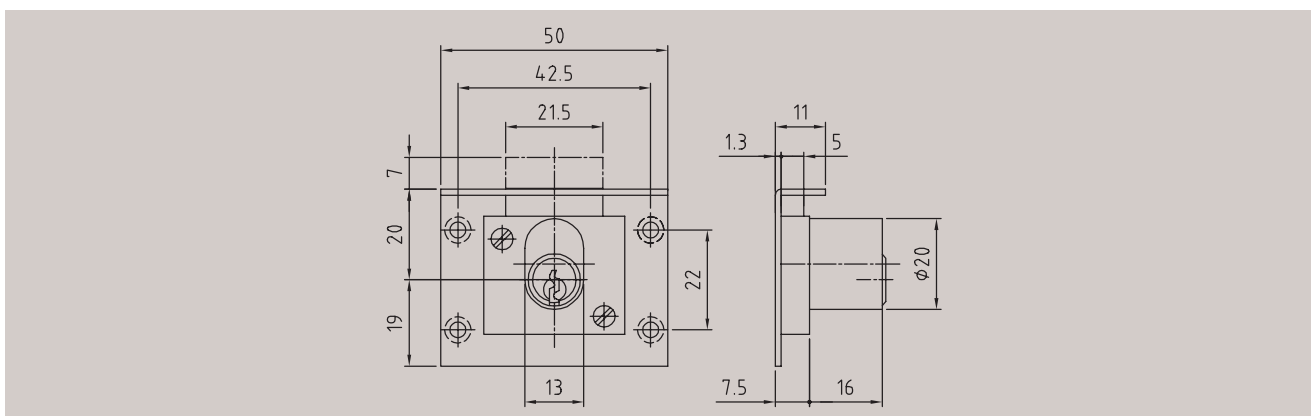
## Article 4166

## Inlaid lock



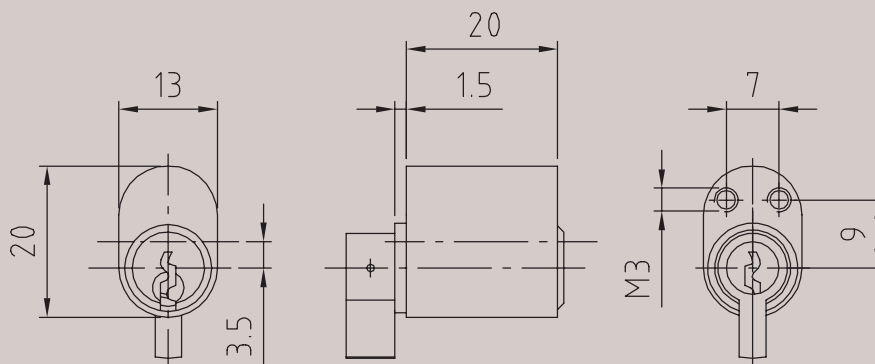
## Technical data

Material	Cylinder, lock case and dead bolt: brass
Finish	Brass, satin nickel-plated
Pin tumblers	4
Keys in series / locking system	2 / 2
Function	Drawer. Length with cylinder 16mm, further lengths upon request.
Backset	20mm
Accessories	Escutcheon
Order specifications	Figure shows right-hand lock. Available for: RH, LH, drawer fitting.

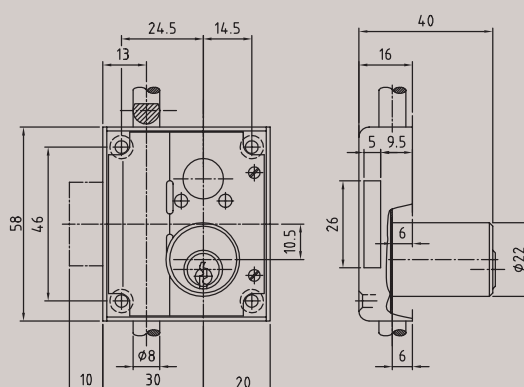


**Article 39**      **Oval cylinder**

Technical data	
<b>Material</b>	Brass
<b>Finish</b>	Brass, satin nickel-plated
<b>Pin tumblers</b>	5
<b>Keys in series / locking system</b>	2 / 2
<b>Function</b>	Spare cylinder for part no. 4166. Length 20mm, further lengths upon request.
<b>Accessories</b>	(without escutcheon) Follower part no. 95004, other follower shapes upon request.


**Article to 4134**      **Espagnolette lock**

Technical data	
<b>Material</b>	Cylinder: brass. Lock case: steel.
<b>Finish</b>	Cylinder: brass, satin nickel-plated. Lock case: steel, nickel-plated.
<b>Pin tumblers</b>	5
<b>Keys in series / locking system</b>	2 / 2
<b>Function</b>	Length with cylinder 30mm, further lengths upon request.
<b>Backset</b>	30mm
<b>Accessories</b>	Escutcheon, catch hooks, rod guides, striking plate, locking bolt (without rods)
<b>Order specifications</b>	Figure shows right-hand lock. Available for: RH, LH fitting



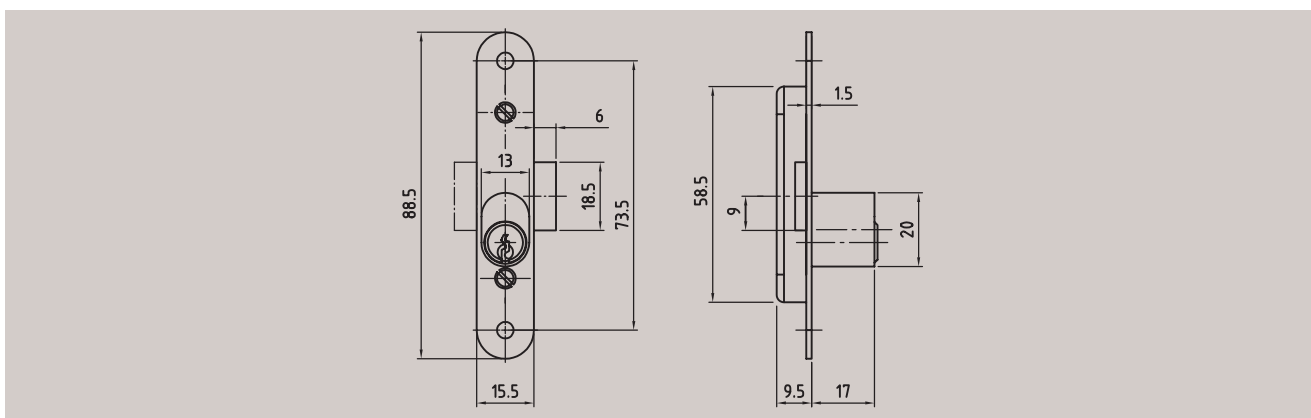
## Article 159

## Rim lock for furniture



## Technical data

<b>Material</b>	Cylinder and lock case: brass
<b>Finish</b>	Cylinder and Lock case: brass, polished nickel-plated
<b>Pin tumblers</b>	5
<b>Keys in series / locking system</b>	2 / 2
<b>Accessories</b>	Escutcheon



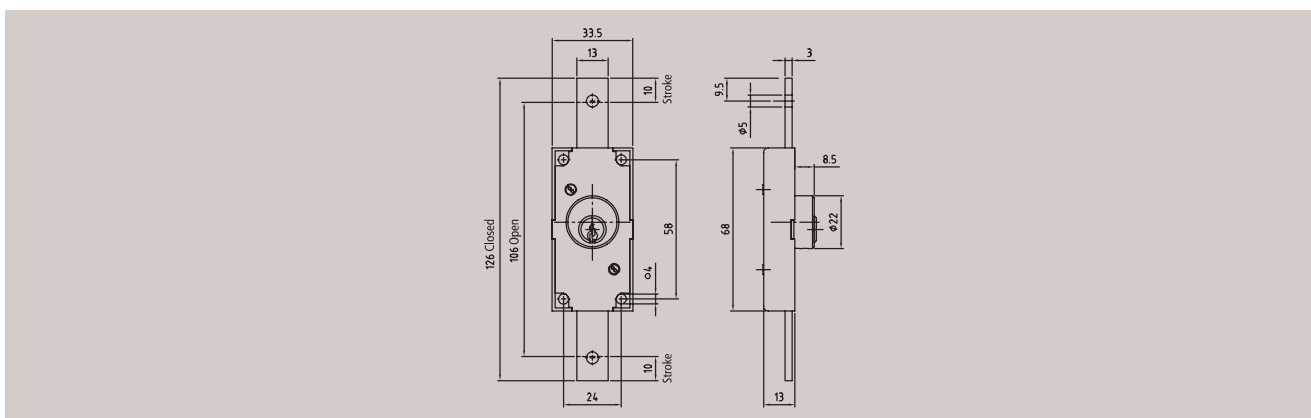
## Article 180 3/4

## Rod lock



## Technical data

<b>Material</b>	Cylinder: brass. Lock case and dead bolt: steel.
<b>Finish</b>	Cylinder: brass, polished nickel-plated. Lock case and dead bolt: steel, raw.
<b>Pin tumblers</b>	4
<b>Keys in series / locking system</b>	2 / 2
<b>Function</b>	Key rotation: 90°. Key removable only in locked position.

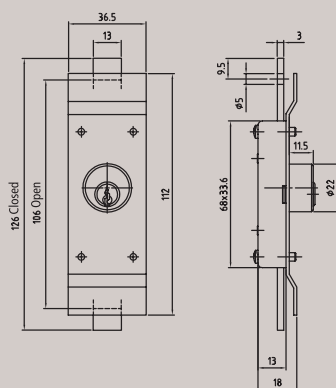
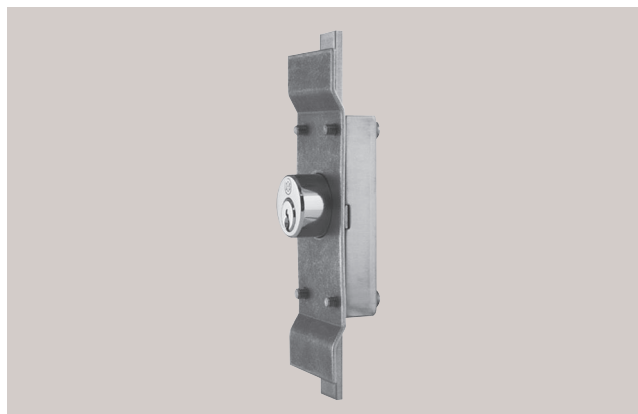


## Cabinet locks

### Article 118o 3/4 Rod lock

#### Technical data

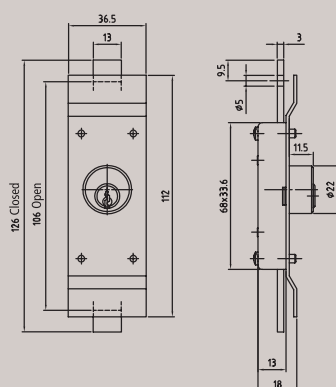
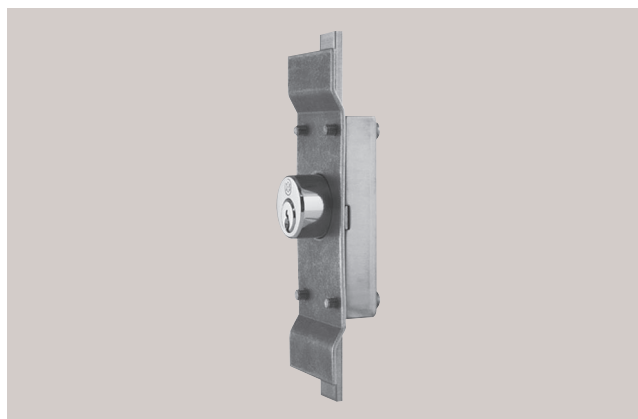
<b>Material</b>	Cylinder: brass. Lock case and dead bolt: steel.
<b>Finish</b>	Cylinder: brass, polished nickel-plated. Lock case and dead bolt: steel, raw.
<b>Pin tumblers</b>	4
<b>Keys in series / locking system</b>	2 / 2
<b>Function</b>	Key rotation: 90°. Key removable only in locked position.
<b>Accessories</b>	Weld-on plate



### Article 118o/3o Rod lock

#### Technical data

<b>Material</b>	Cylinder: brass. Lock case and dead bolt: steel.
<b>Finish</b>	Cylinder: brass, polished nickel-plated. Lock case and dead bolt: steel, raw.
<b>Pin tumblers</b>	5
<b>Keys in series / locking system</b>	2 / 2
<b>Function</b>	Key rotation: 360°. Key removable in both positions.
<b>Accessories</b>	Weld-on plate



Article 219

Padlock



Technical data

Material Brass

Pin tumblers 5

Keys in series / locking system 2 / 2

