

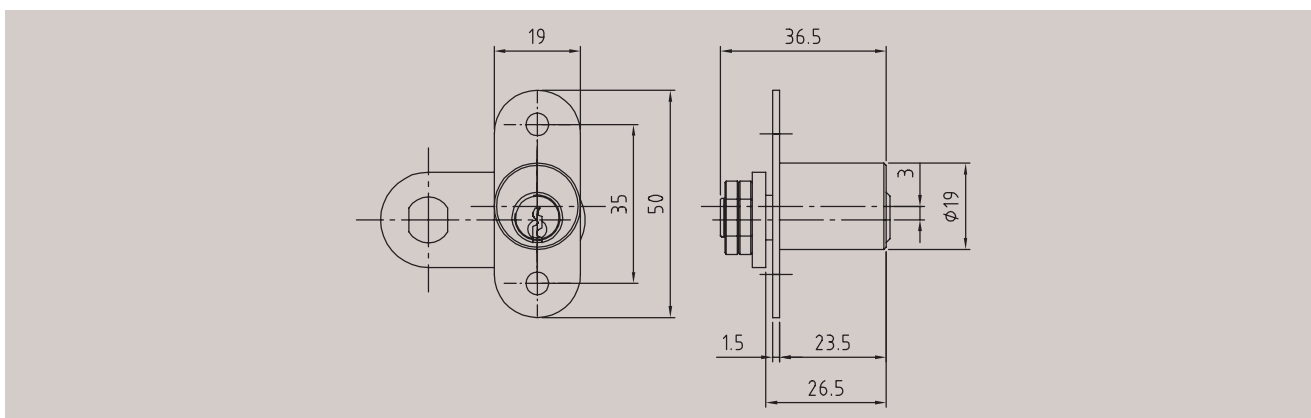
Article 5744

Cam cylinder



Technical data

Material	Brass
Finish	Brass, satin nickel-plated
Pin tumblers	5
Keys in series / locking system	2 / 2
Function	Key rotation: 90°. Key removable only in locked position.
Accessories	Escutcheon
Order specifications	Closing direction as per closing direction table, see p. 52



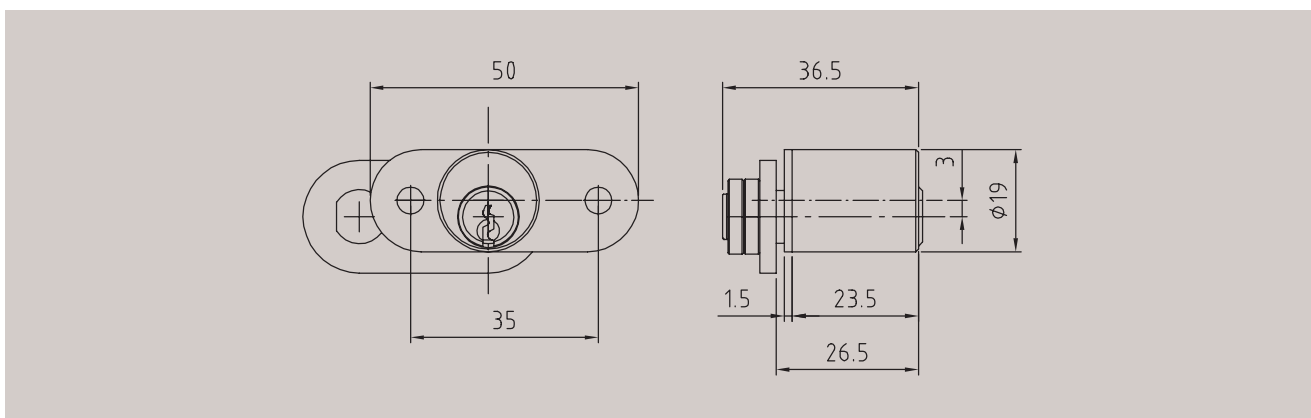
Article 5744/30

Cam cylinder



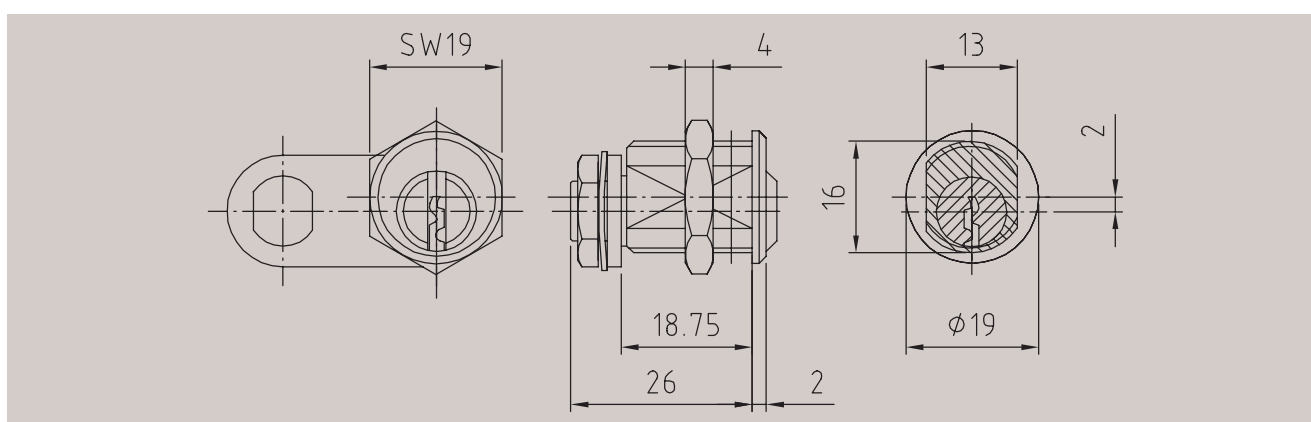
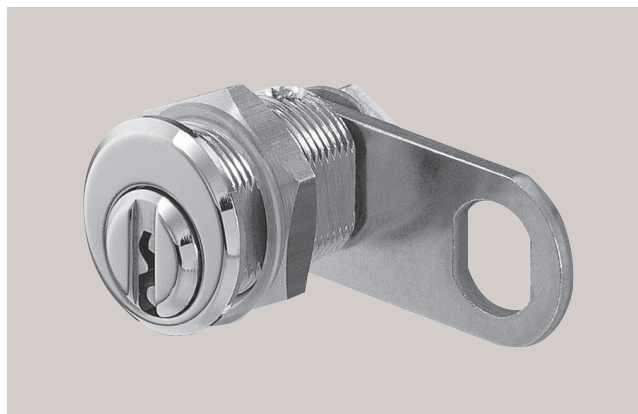
Technical data

Material	Brass
Finish	Brass, satin nickel-plated
Pin tumblers	5
Keys in series / locking system	2 / 2
Function	Key rotation: 90°. Key removable only in locked position.
Accessories	Escutcheon
Order specifications	Closing direction as per closing direction table, see p. 52



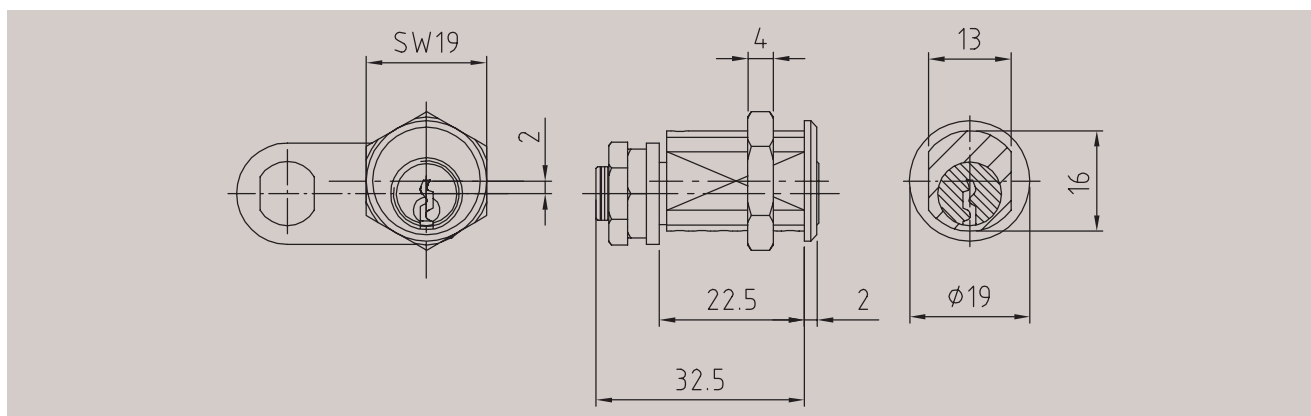
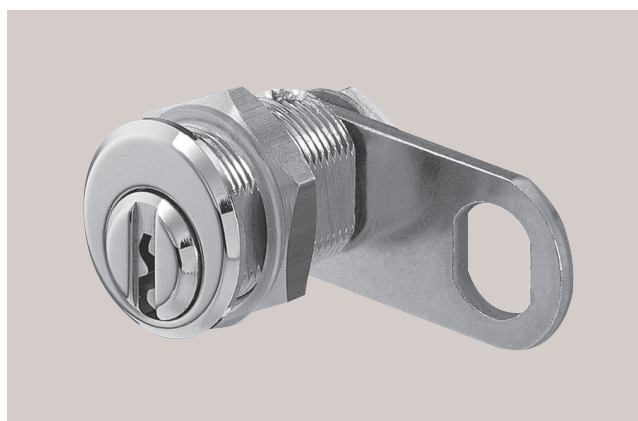
Article 5634 Cam cylinder

Technical data	
Material	Brass
Finish	Brass, polished nickel-plated
Pin tumblers	4
Keys in series / locking system	2 / -
Function	Key rotation: 90°. Key removable only in locked position. Further cams upon request, see p. 50 ff.
Order specifications	Closing direction as per closing direction table, see p. 52



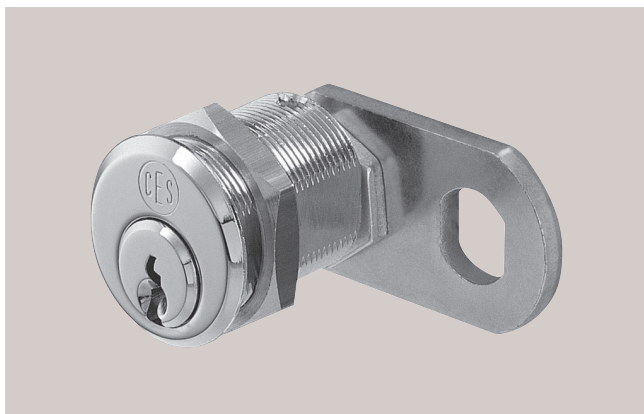
Article 5634/33 Cam cylinder

Technical data	
Material	Brass
Finish	Brass, polished nickel-plated
Pin tumblers	5
Keys in series / locking system	2 / -
Function	Key rotation: 90°. Key removable only in locked position. Further cams upon request, see p. 50 ff.
Order specifications	Closing direction as per closing direction table, see p. 52



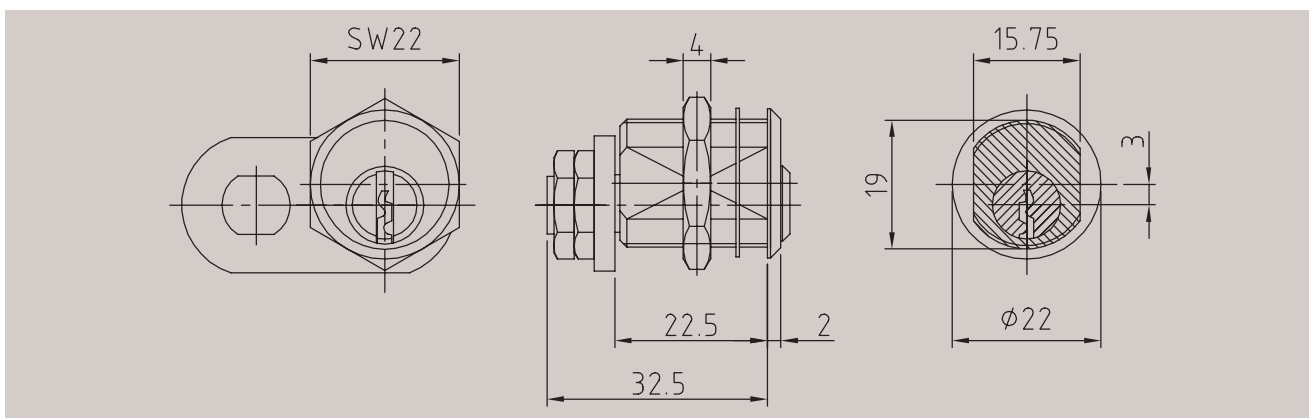
Article 5225

Cam cylinder



Technical data

Material	Brass
Finish	Brass, polished nickel-plated
Pin tumblers	5
Keys in series / locking system	2 / 2
Function	Key rotation: 90°. Key removable only in locked position. Further cams upon request, see p. 50 ff.
Order specifications	Closing direction as per closing direction table, see p. 52



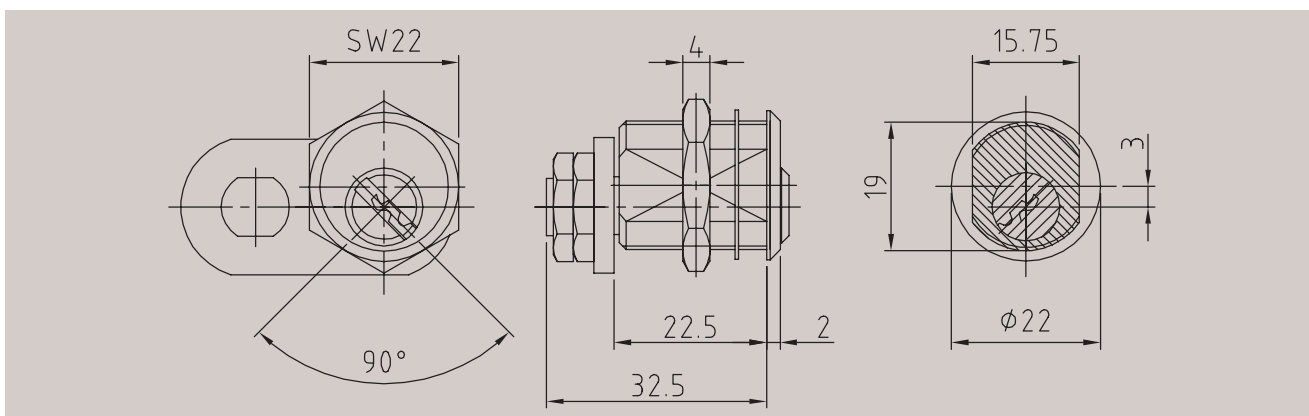
Article 5225 DB

Cam cylinder



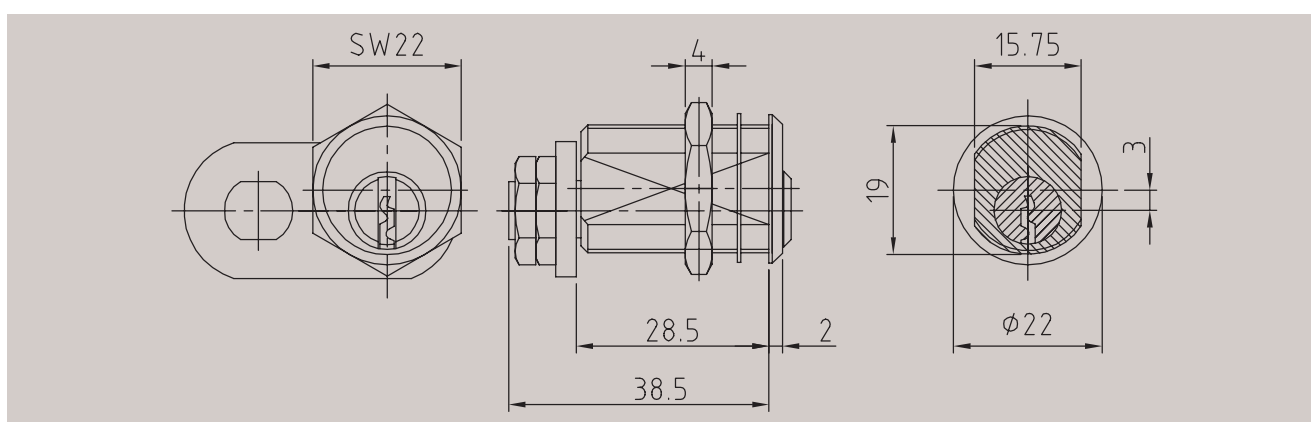
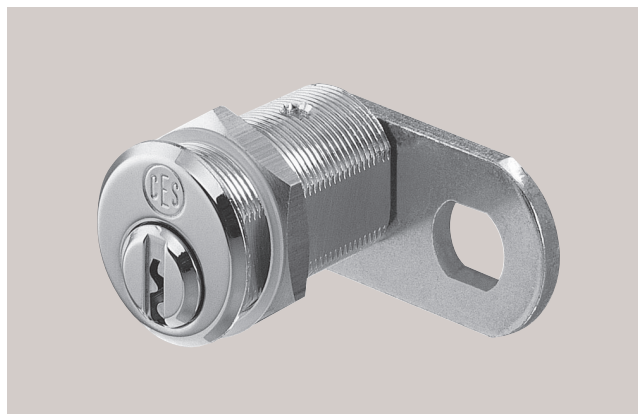
Technical data

Material	Brass
Finish	Brass, polished nickel-plated
Pin tumblers	5
Keys in series / locking system	2 / -
Function	Key rotation: 90°. Key removable in both positions. Further cams upon request, see p. 50 ff.
Order specifications	Closing direction as per closing direction table, see p. 52



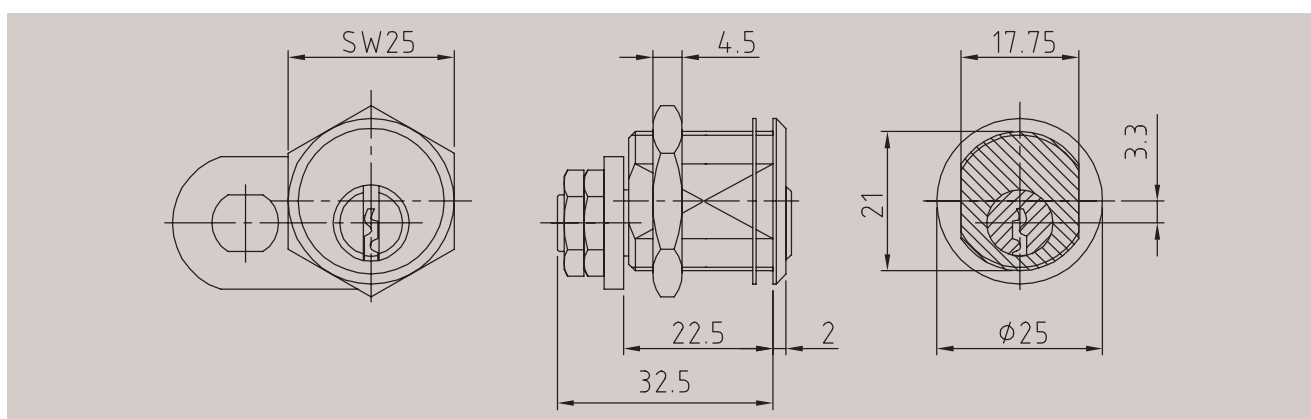
Article 5225/42 Cam cylinder

Technical data	
Material	Brass
Finish	Brass, polished nickel-plated
Pin tumblers	5
Keys in series / locking system	2 / 2
Function	Key rotation: 90°. Key removable only in locked position. Further cams upon request, see p. 50 ff.
Order specifications	Closing direction as per closing direction table, see p. 52



Article 5256 Cam cylinder

Technical data	
Material	Brass
Finish	Brass, polished nickel-plated
Pin tumblers	5
Keys in series / locking system	2 / 2
Function	Key rotation: 90°. Key removable only in locked position. Further cams upon request, see p. 50 ff.
Order specifications	Closing direction as per closing direction table, see p. 52

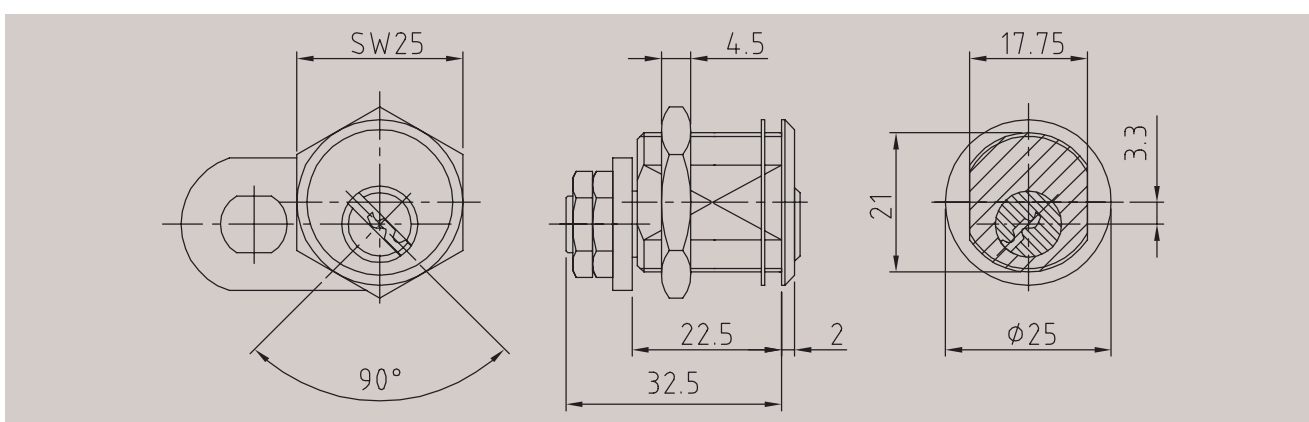


Article 5256 DB Cam cylinder



Technical data

Material	Brass
Finish	Brass, polished nickel-plated
Pin tumblers	5
Keys in series / locking system	2 / -
Function	Key rotation: 90°. Key removable in both positions. Further cams upon request, see p. 50 ff.
Order specifications	Closing direction as per closing direction table, see p. 52

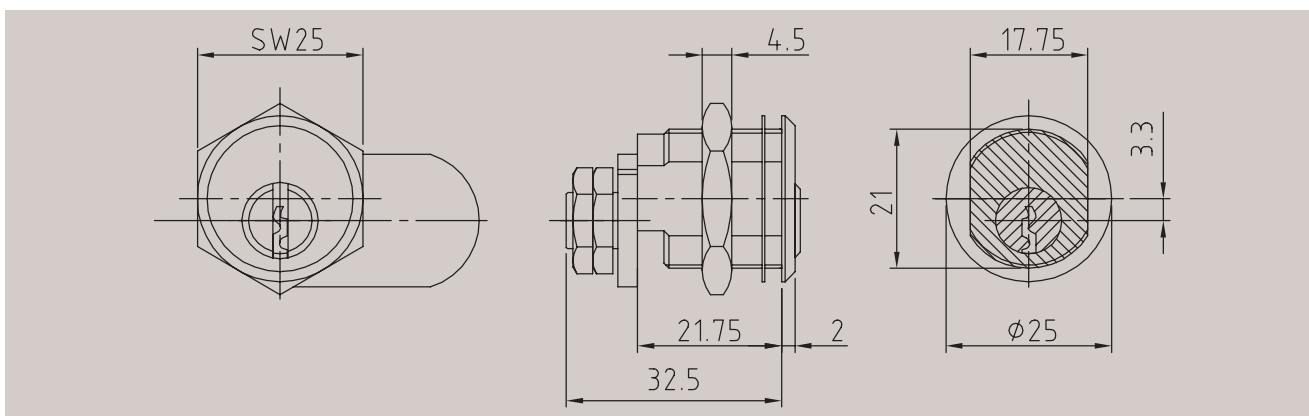


Article 5712 Cam cylinder



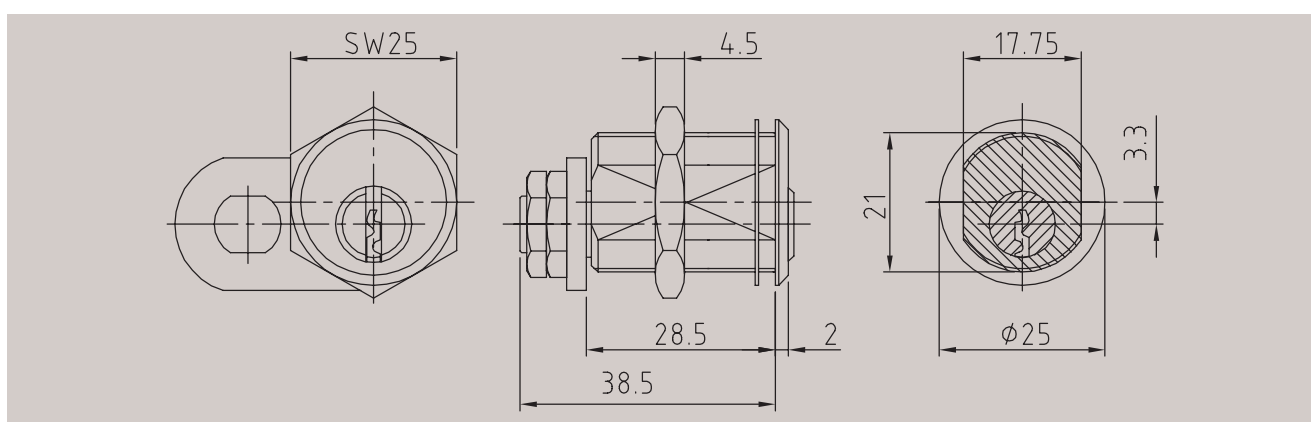
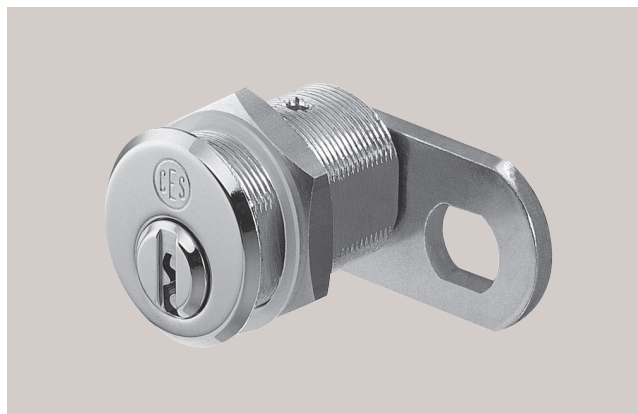
Technical data

Material	Brass
Finish	Brass, satin chromium-plated
Pin tumblers	5
Keys in series / locking system	- / 2
Function	Key rotation: 360°. Cam rotation: 90°.
Order specifications	Closing direction A or B



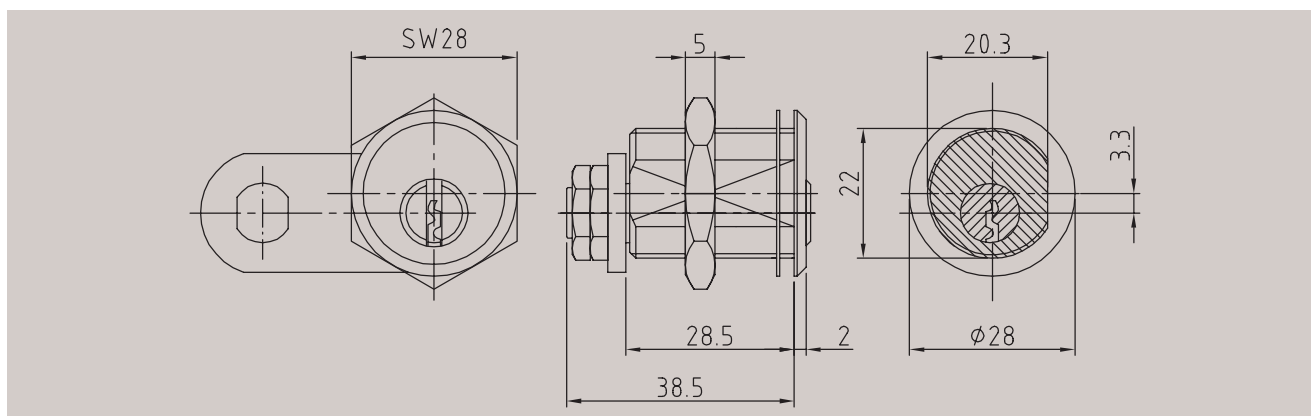
Article 5256/42 Cam cylinder

Technical data	
Material	Brass
Finish	Brass, polished nickel-plated
Pin tumblers	5
Keys in series / locking system	2 / 2
Function	Key rotation: 90°. Key removable only in locked position. Further cams upon request, see p. 50 ff.
Order specifications	Closing direction as per closing direction table, see p. 52



Article 5254 Cam cylinder

Technical data	
Material	Brass
Finish	Brass, polished nickel-plated
Pin tumblers	5
Keys in series / locking system	2 / 2
Function	Key rotation: 90°. Key removable only in locked position. Further cams upon request, see p. 50 ff.
Order specifications	Closing direction as per closing direction table, see p. 52



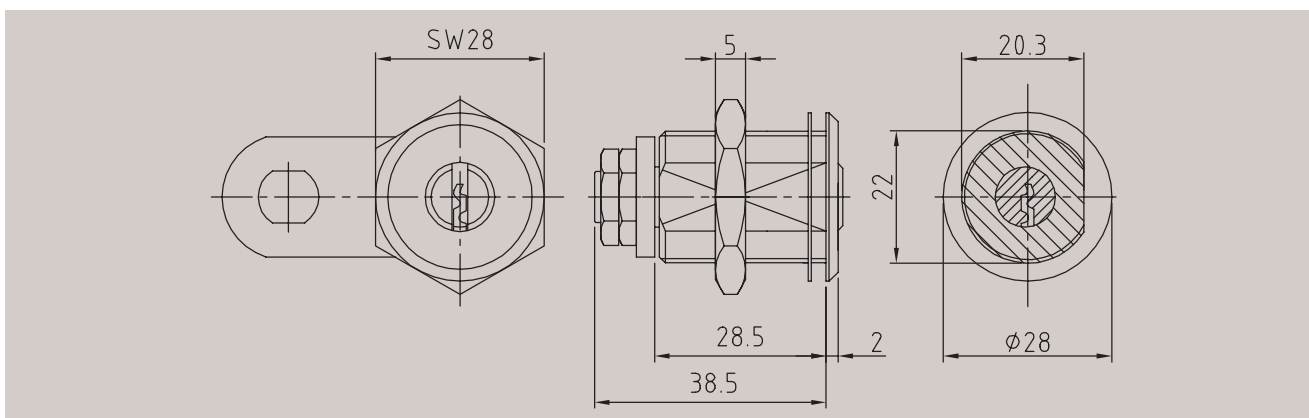
Article 5254 DB

Cam cylinder



Technical data

Material	Brass
Finish	Brass, polished nickel-plated
Pin tumblers	5
Keys in series / locking system	2 / 2
Function	Key rotation: 90°. Key removable in both positions. Further cams see p. 50 ff.
Order specifications	Closing direction as per closing direction table, see p. 52



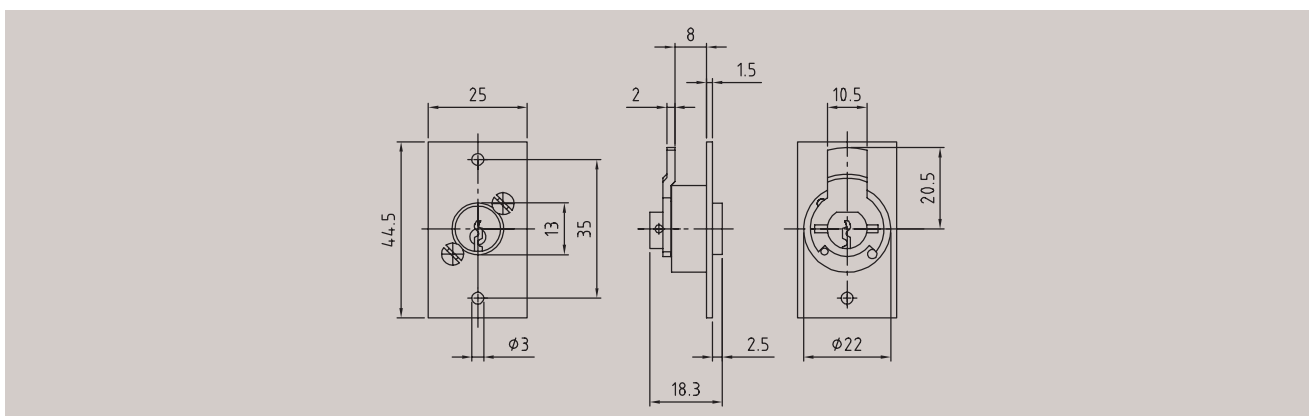
Article 5560

Cam cylinder



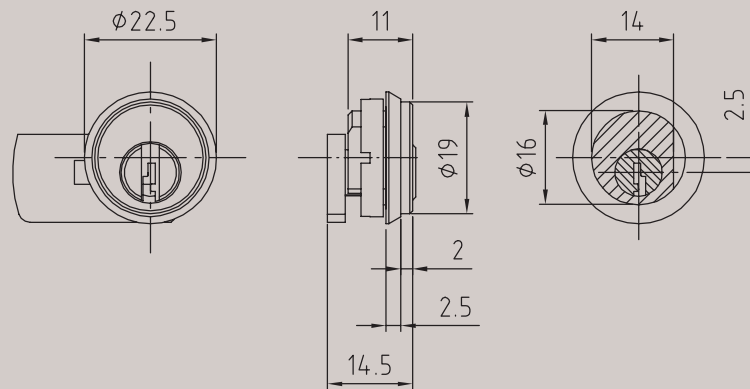
Technical data

Material	Brass
Finish	Brass, polished. Screw-down plate: nickel-plated.
Pin tumblers	3
Keys in series / locking system	2 / -
Function	Key rotation: 90°. Key removable in both positions.
Order specifications	Closing direction as per closing direction table, see p. 52



Article 5614 **Cam cylinder**

Technical data	
Material	Brass
Finish	Brass, polished nickel-plated
Pin tumblers	3
Keys in series / locking system	2 / -
Function	Key rotation: 90°. Key removable only in locked position.
Order specifications	Closing direction as per closing direction table, see p. 52



Article 5688 **Cam cylinder**

Technical data	
Material	Brass
Finish	Brass, polished nickel-plated
Pin tumblers	4
Keys in series / locking system	2 / -
Function	Key rotation: 90°. Key removable only in locked position.
Order specifications	Closing direction as per closing direction table, see p. 52

